

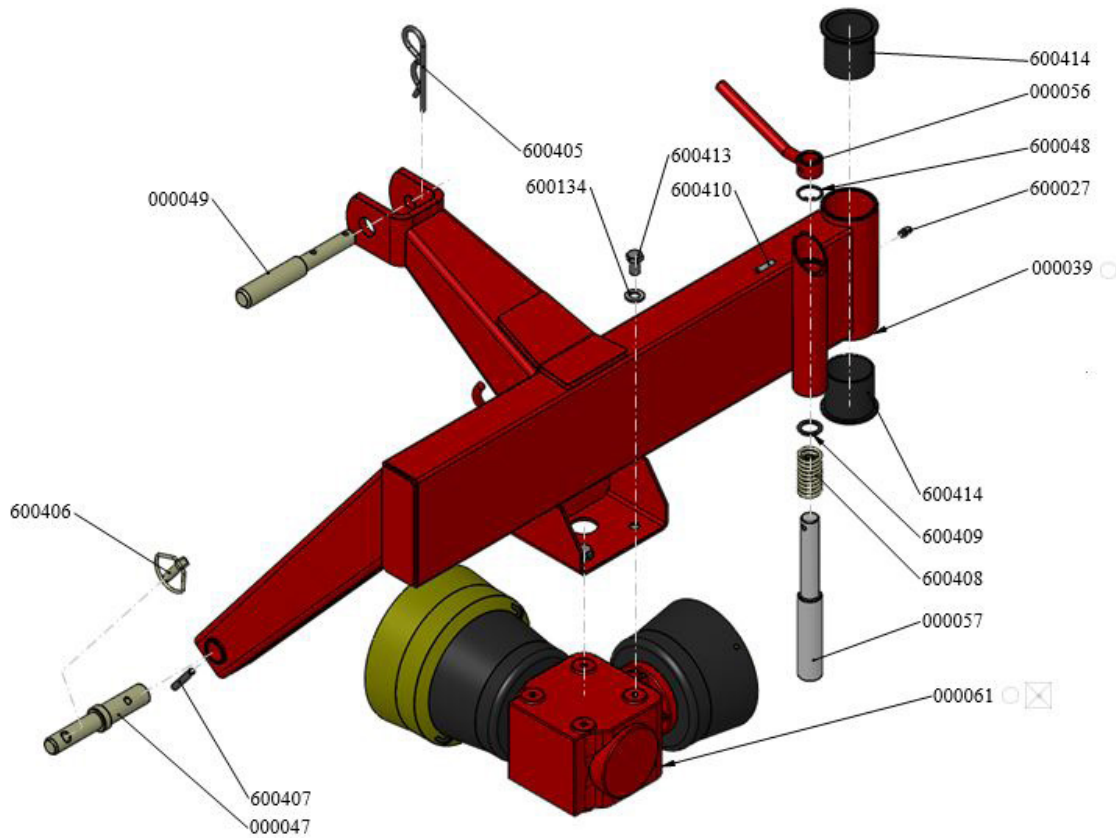


# Parts Manual

Ibex Drum Mower  
Model: TS51C with Conditioner

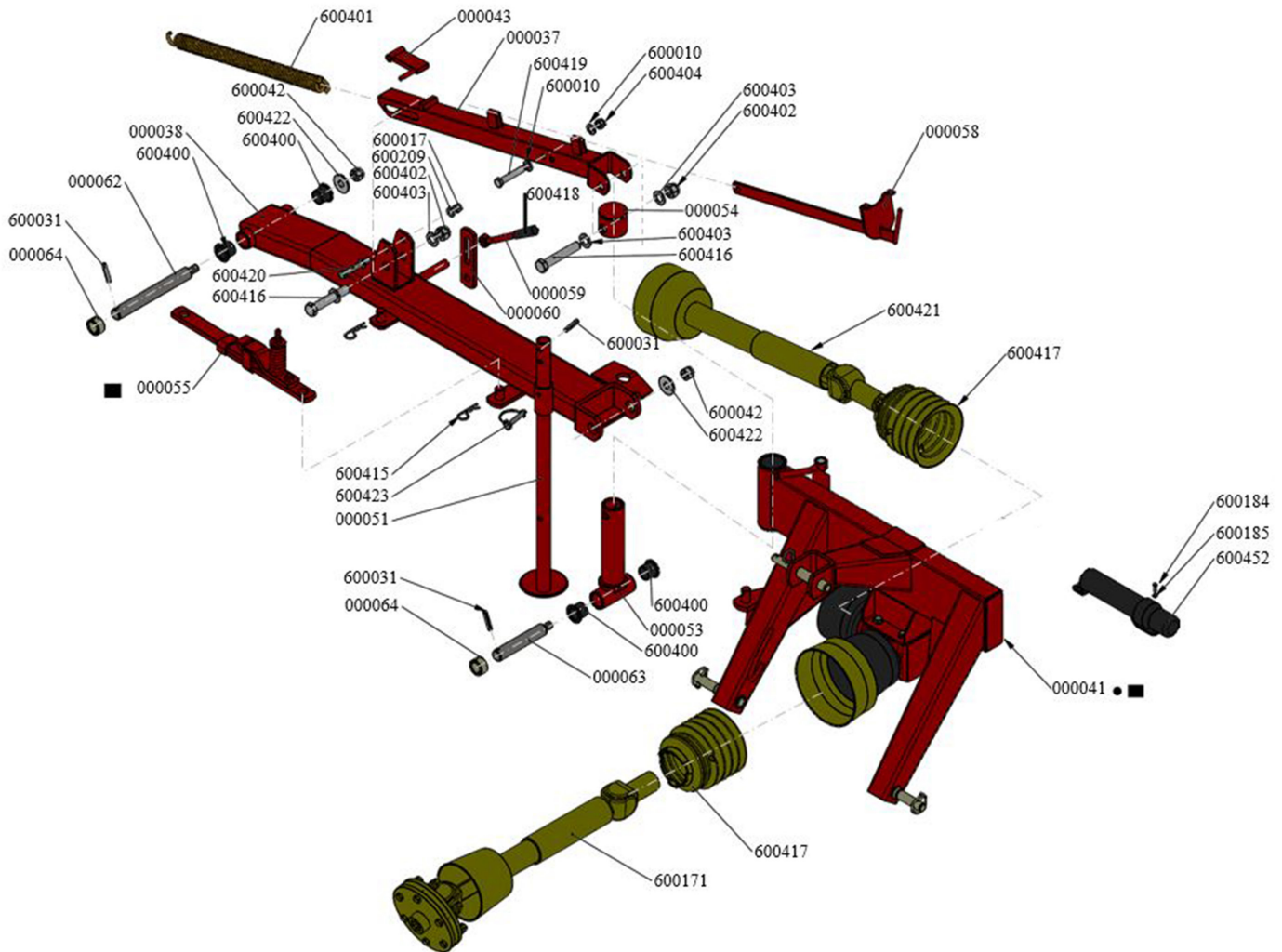


# 1. Frame & 90° Gearbox



Part No.	Description	Quantity
000039	3-POINT HITCH	1
000047	PIVOT 2° POINT	2
000049	PIVOT 3° POINT	1
000056	HANDLE	1
000057	PIVOT	1
000061	CENTRAL GEAR BOX ASSY	1
600027	GREASING NIPPLE M8x1	1
600048	SEEGER 30I	1
600134	CORRUGATED SPRING WASHER M12	4
600405	"R" CLIP D. 5,6	1
600406	SNAP PIN D.10 L.46	2
600407	ELASTIC PIN 8x50	2
600408	SPRING (COMPRESSION)	1
600409	SHEAR WASHER	1
600410	ELASTIC PIN 6x30	1
600413	BOLT TE M12x20	4
600414	SYNTETIC BUSHING with COLLAR	2

## 2. Frame



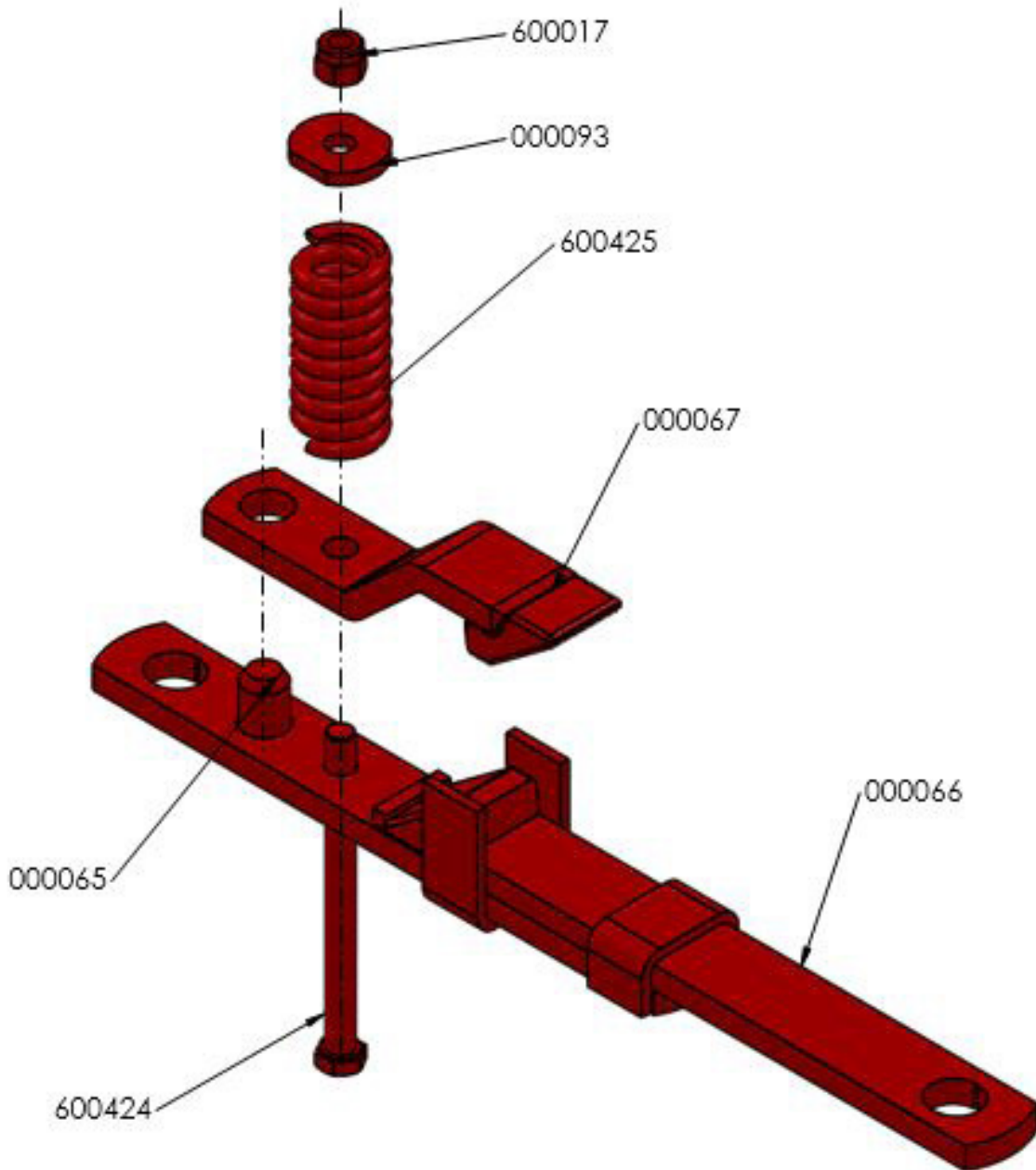
Part No.	Description	Quantity
000037	SPRING ARM	1
000038	SUPPORT FRAME	1
000041	3-POINTS HITCH ASSY	1
000043	OSCILLATION-LOCKING PLATE	1
000051	STAND	1
000053	ARTICULATION PIVOT	1
000054	CAP FOR ARTICULATION PIVOT	1
000055	SAFETY LOCK ASSY	1
000058	BLADE REMOVAL TOOL	1
000059	HANDLE	1
000060	PLATE (SLOTTED HOLE)	1
000062	PIVOT	1
000063	PIVOT	1
000064	STEEL BUSHING	2
600010	FLAT WASHER M14	2
600017	LOCK NUT M12	1

## 2. Frame (cont.)



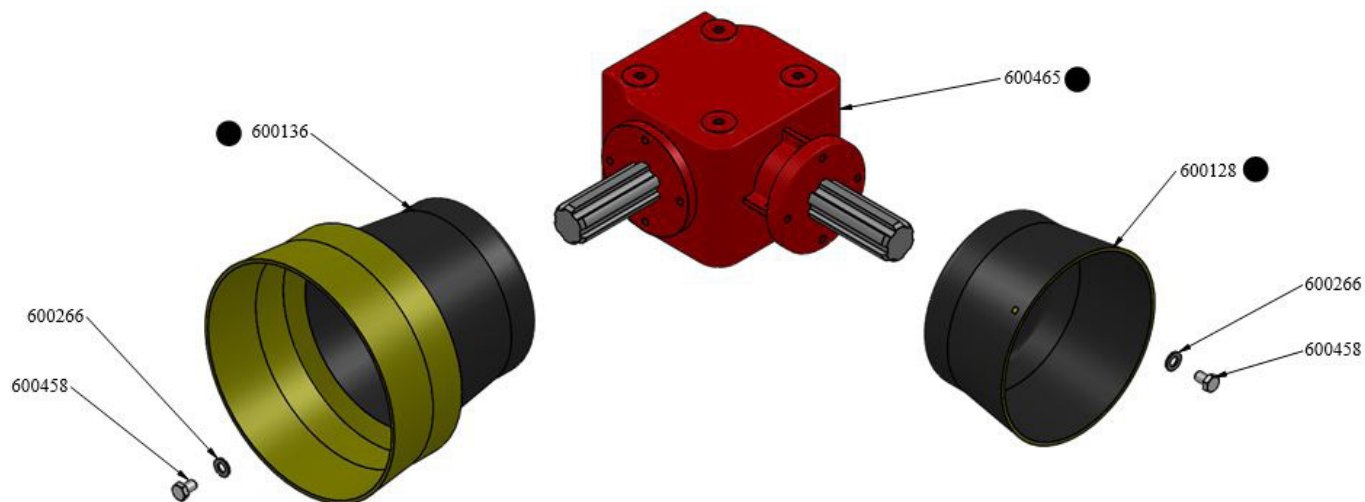
600031	ELASTIC PIN 10X50	3
600042	LOCK NUT M18	2
600171	MAIN PTO SHAFT WITH CLUTCH	1
600209	FLAT WASHER M12	2
600400	SYNTETIC BUSHING with COLLAR	4
600401	SPRING (TRACTION)	1
600402	LOCK NUT M20	2
600403	FLAT WASHER M20	4
600404	LOCK NUT M14	1
600415	"R" CLIP D.3,6	2
600416	BOLT M20x120	2
600417	PROTECTION COIF	2
600418	PLASTIC HANDLE	1
600419	BOLT M14x80	1
600420	BOLT M12x90	1
600421	INTERMEDIATE PTO SHAFT WITH FREE WHEEL	1
600422	FLAT WASHER M16	2
600423	SNAP PIN D.10	1
600452	HOUSING FOR MANUAL 2"	1
600184	BOLT TE M6X20	2
600185	FLAT WASHER M6	2

### 3. Breakaway Bar



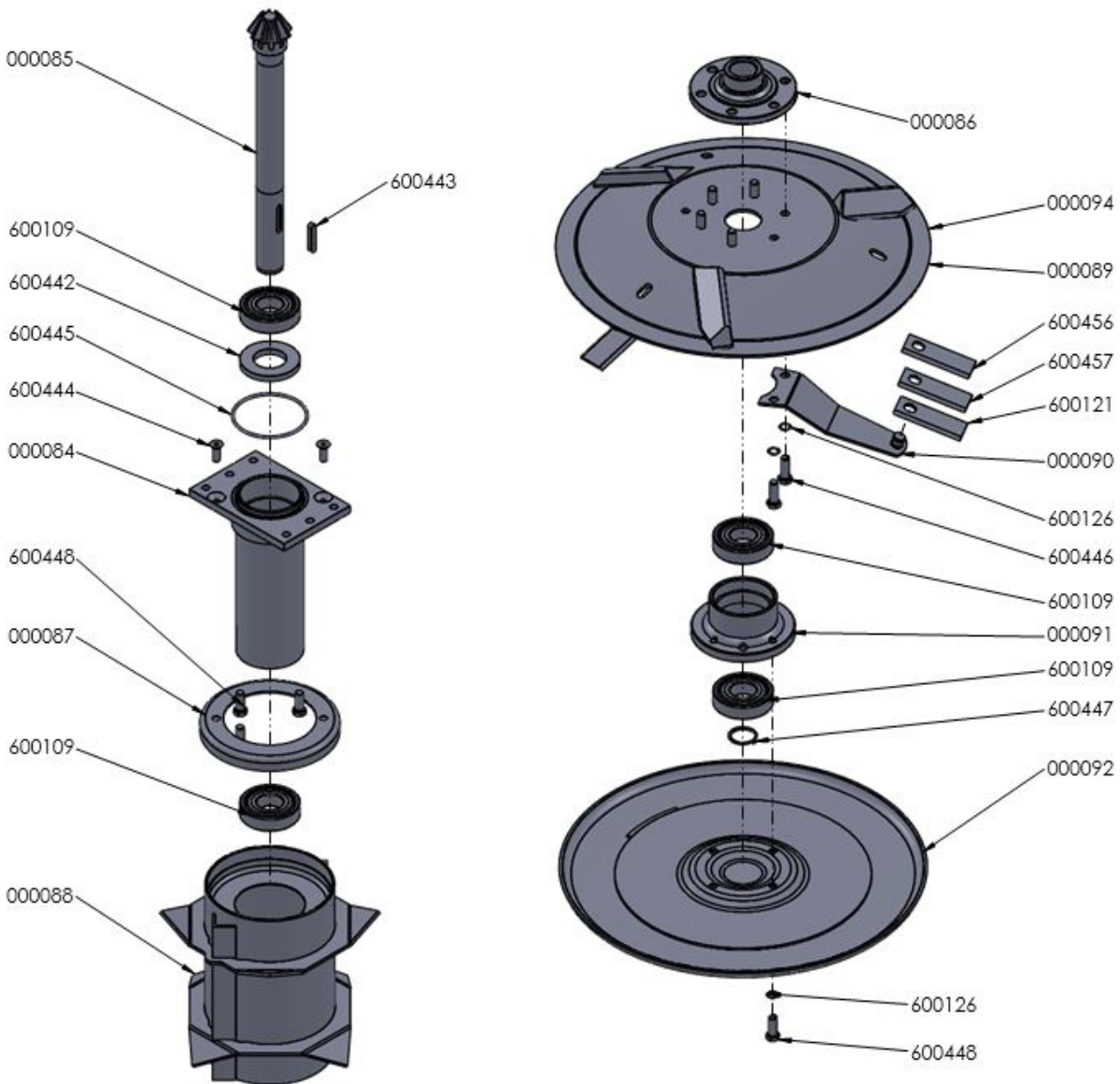
Part No.	Description	Quantity
600017	LOCK NUT M12	1
000093	WASHER M12	1
600424	BOLT M12X150	1
600425	COMPRESSION SPRING	1
000067	LATCH	1
000065	PIN	1
000066	BODY	1

## 4. 90° Gearbox



Part No.	Description	Quantity
600266	FLAT WASHER M6	8
600458	BOLT TE M6X15	8
600136	PROTECTION COIF	1
600128	PROTECTION COIF	1
600465	CENTRAL GEAR BOX	1

# 5. Drums



Part No.	Description	Quantity
000084	DRUM-HOLDER	2
600109	BEARING	8
600442	OIL SEAL RING 10X50X90	2
000085	PINION Z=9	2
600443	PARALLEL KEY 8X10X50	2
000086	IDLE DISC SUPPORT FLANGE	2
000087	DRUM PROTECTION RING	2
600444	BOLT TSEI M14x35	4
600445	O Ring 114.6x107.54x3.53	2
000088	CONDITIONER DRUM	2
600126	CUP MILLED WASHER M12	20
600446	BOLT TE M12X35	12
000089	CUTTING DISC LEFT	1

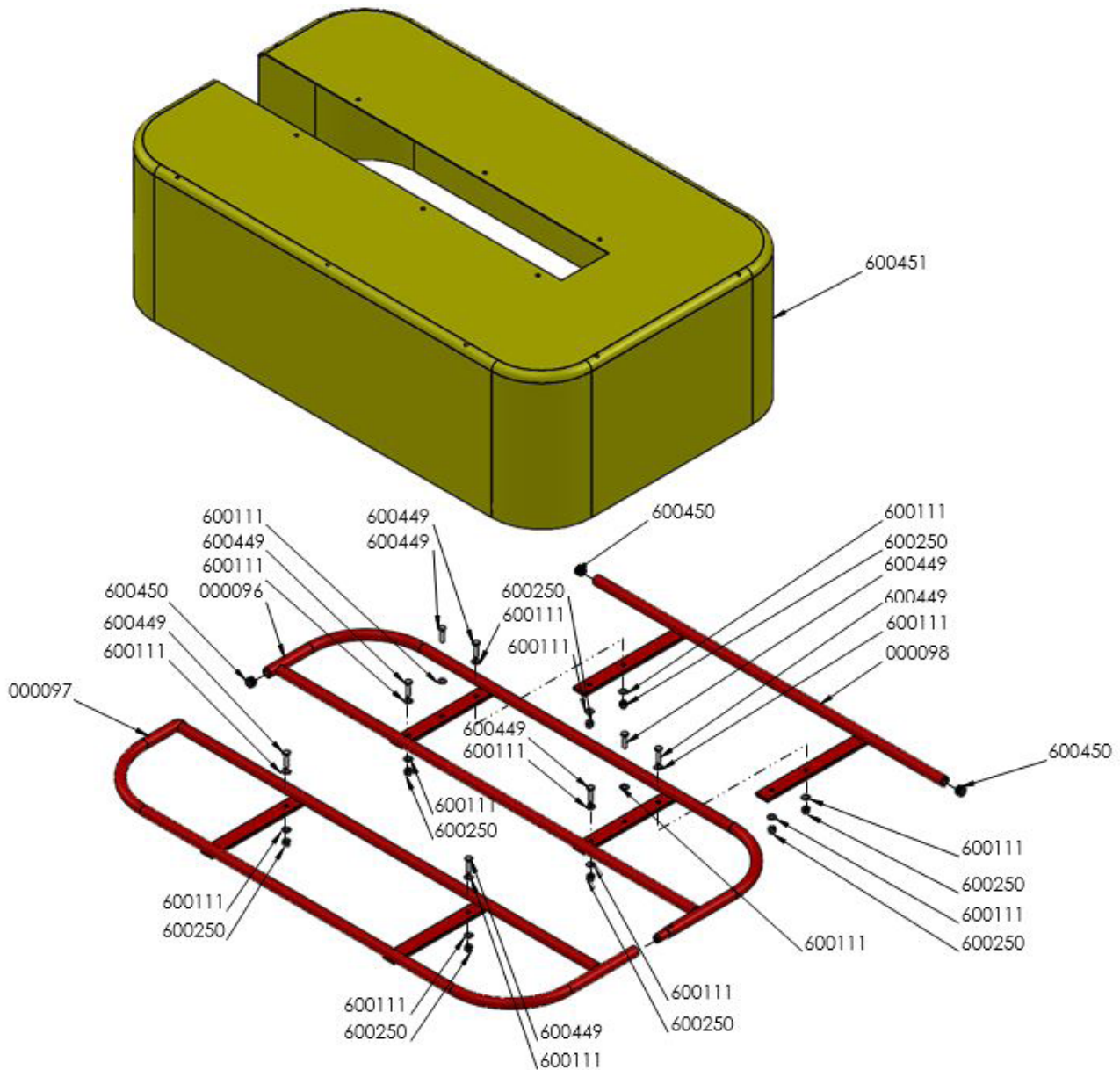
## 5. Drums (cont.)



000094	CUTTING DISC RIGHT	1
000090	BLADE-HOLDER LEAF SPRING	6
600121	STRAIGHT BLADE	6
600456	LEFT- TWISTED BLADE	3
600457	RIGHT-TWISTED BLADE	3
000091	IDLE DISC SUPPORT FLANGE	2
600447	SEEGER 40E	2
000092	LOWER SAUCER	2
600448	BOLT TE M12X30	8

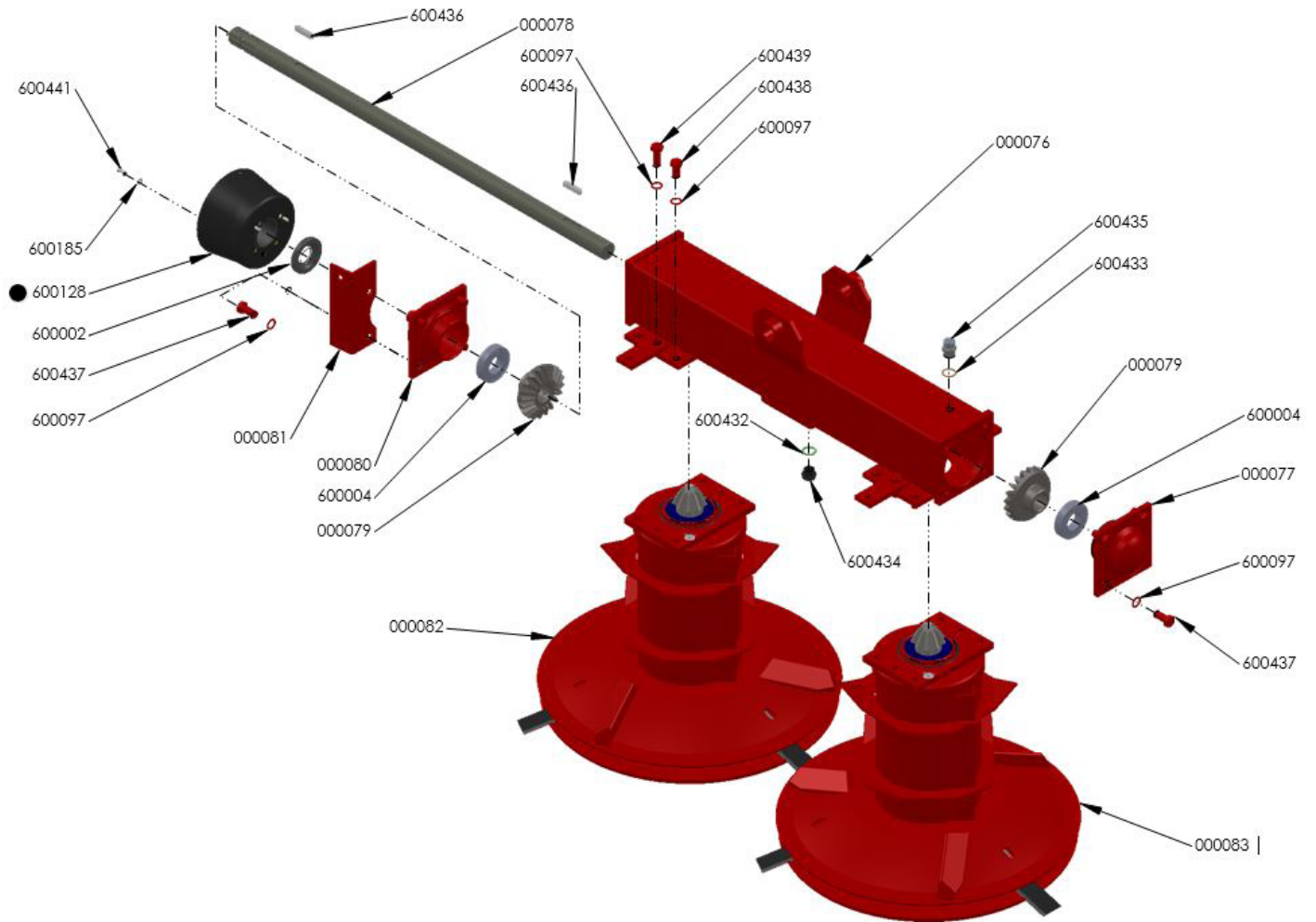


## 6. Protective Cover



Part No.	Description	Quantity
000096	FRONT PROTECTION	1
000097	REAR PROTECTION	1
000098	EXTERNAL FRONT PROTECTION	1
600111	FLAT WASHER M10	16
600250	LOCK NUT M10	8
600449	BOLT M10x35	8
600450	PLASTIC CAP	3
600451	PROTECTION TARP	1

# 7. Drum Unit



Part No.	Description	Quantity
000076	CENTRAL HOUSING	1
000083	RIGHT-SIDE DRUM ASSY	1
000082	LEFT-SIDE DRUM ASSY	1
000077	FLANGE	1
600097	CUP MILLED WASHER	20
600437	BOLT TE M14x30	8
600438	BOLT TE M14x25	8
600439	BOLT TE M14x35	4
600432	RUBBER WASHER	1
600433	COPPER WASHER	1
600434	OIL CAP	1
600435	OIL CAP with BREATHER	1
600004	BEARING	2
000078	TRANSMISSION SHAFT	1
600436	PARALLEL KEY 8X10X45	2
000079	CROWN Z=20	2
000080	SHAFT SUPPORT FLANGE	1

## 7. Drum Unit (cont.)



600002	OIL SEAL RING 35X72X10	1
600128	PROTECTION COIF	1
600185	FLAT WASHER M6	3
600441	BOLT TE M6x16	3
000081	STROKE-END PLATE	1