

SARRACENIA

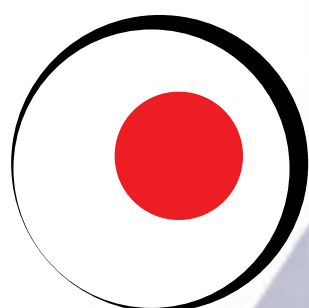
180

Hydraulic version

Assembly







damilano
group





SARRACENIA 180 hydraulic version



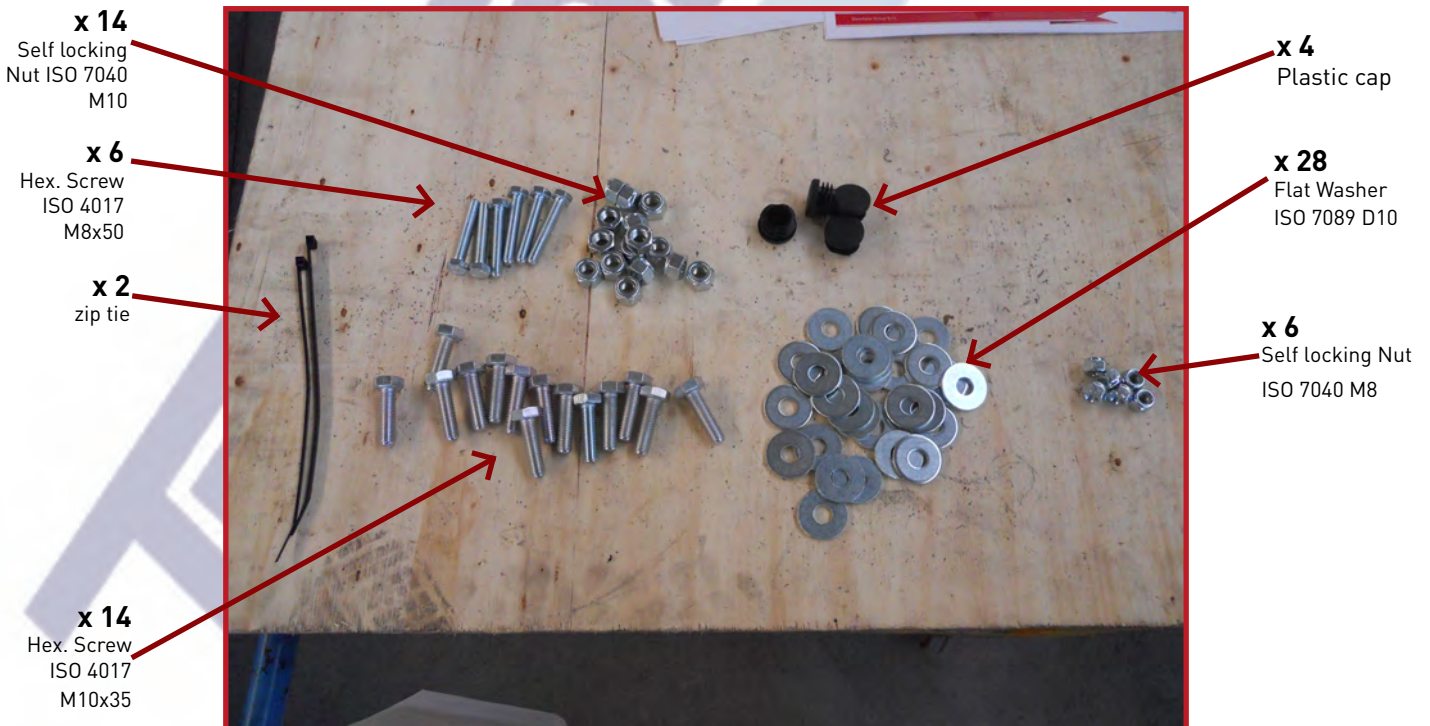
1. Remove the top from the wooden crate and cut the cellophane.



2. Remove from the wooden crate the cutter bar group and lay it on a stable surface.



3. Open the box and take the plastic bag 3.026.0014 containing screws.

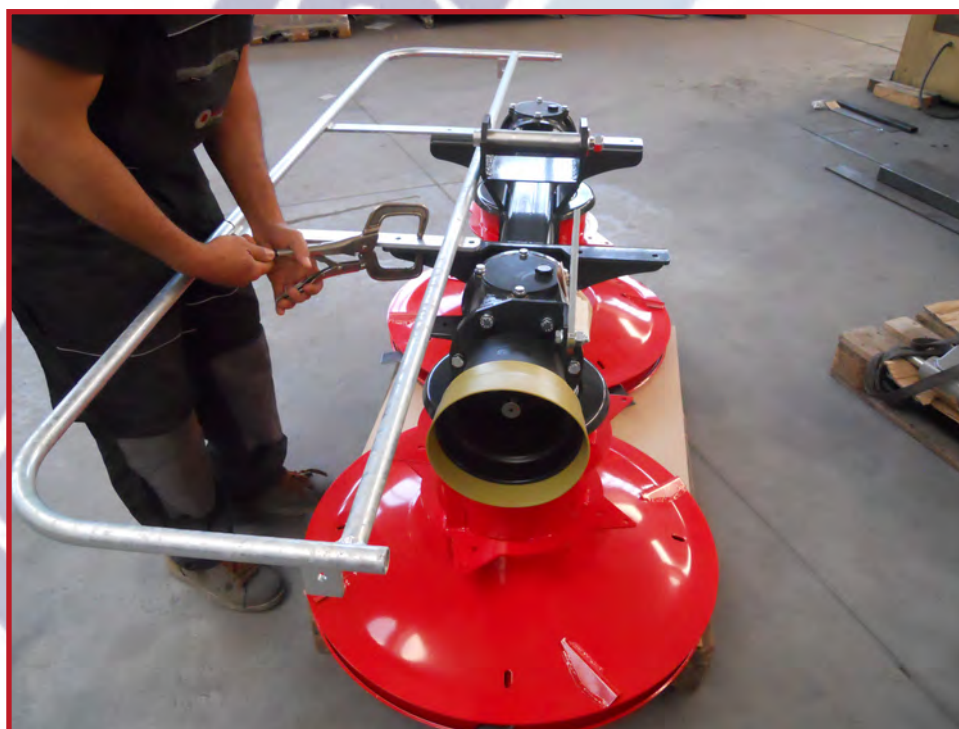


4. Screws necessary for the protection's assembly.

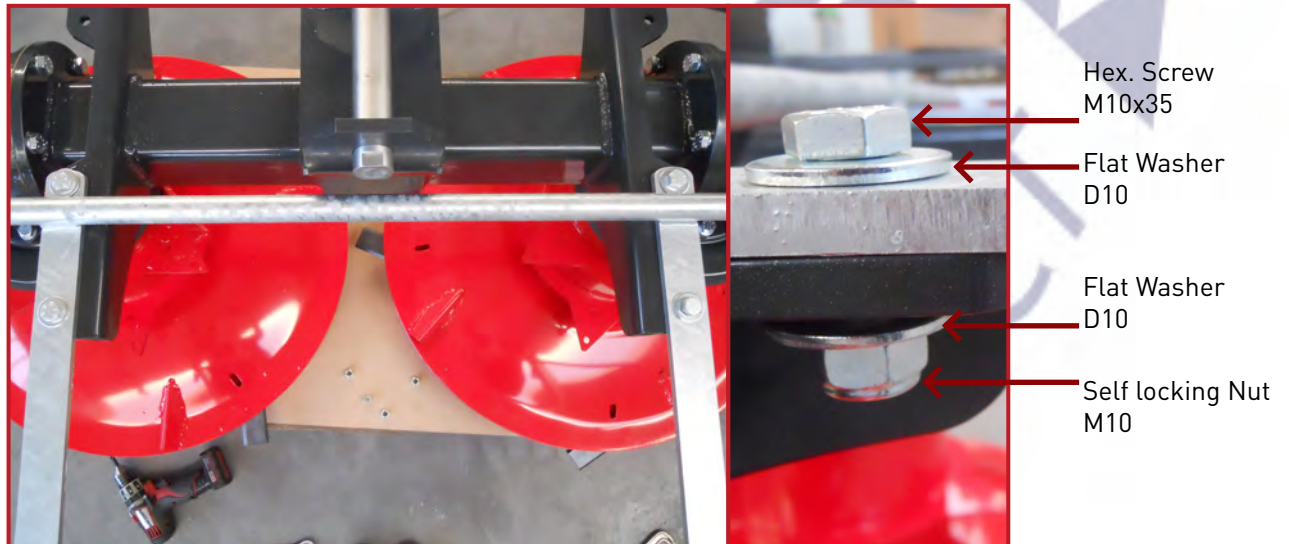
SARRACENIA 180 hydraulic version



5. Take the front frame guard from the wooden crate and insert the plastic cap at the end of the tube like shown in the picture.



6. Lock the front frame guard on the cutter bar like shown in the picture.



7. Insert the washers, screws and nuts in the points indicated.



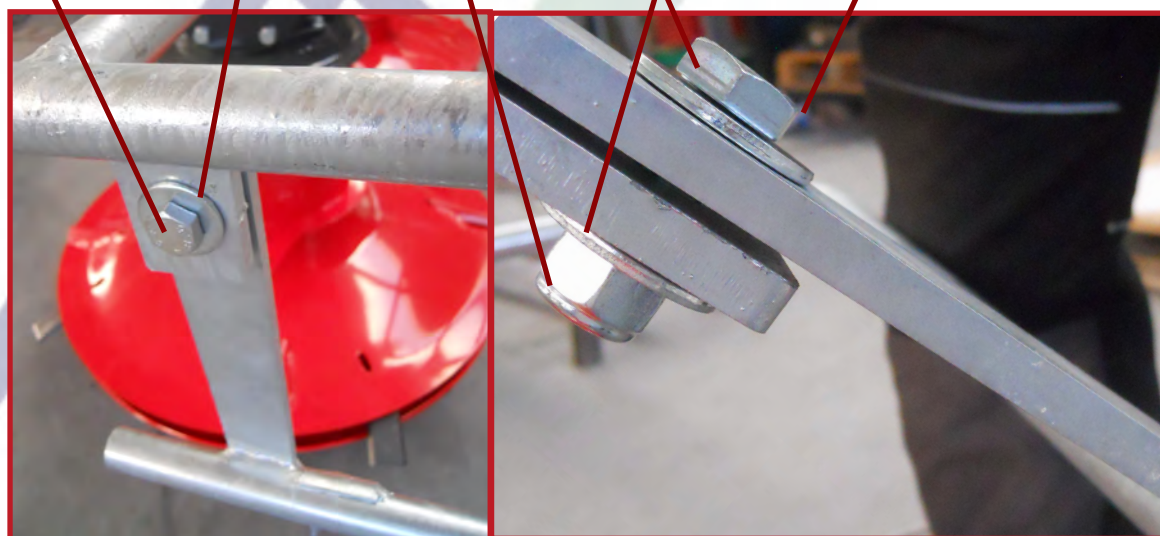
8. Repeat the same procedure for the rear frame guard.

SARRACENIA 180 hydraulic version

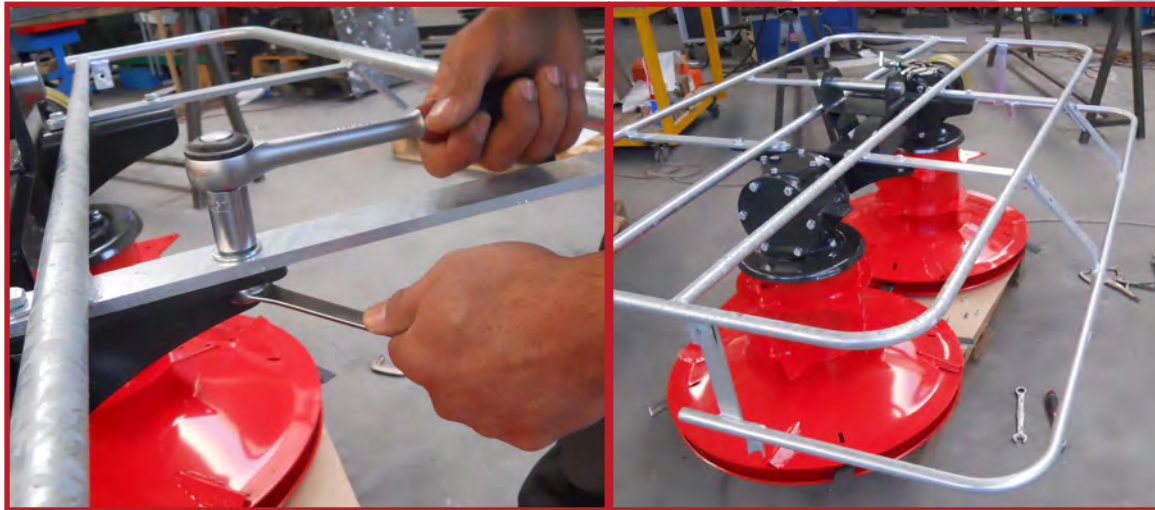


9. Take the extension front frame guard and fix it to the front frame guard like shown in the picture.

Hex. Screw M10x35 Flat Washer D10 Self locking Nut M10 Flat Washer D10 Hex. Screw M10x35

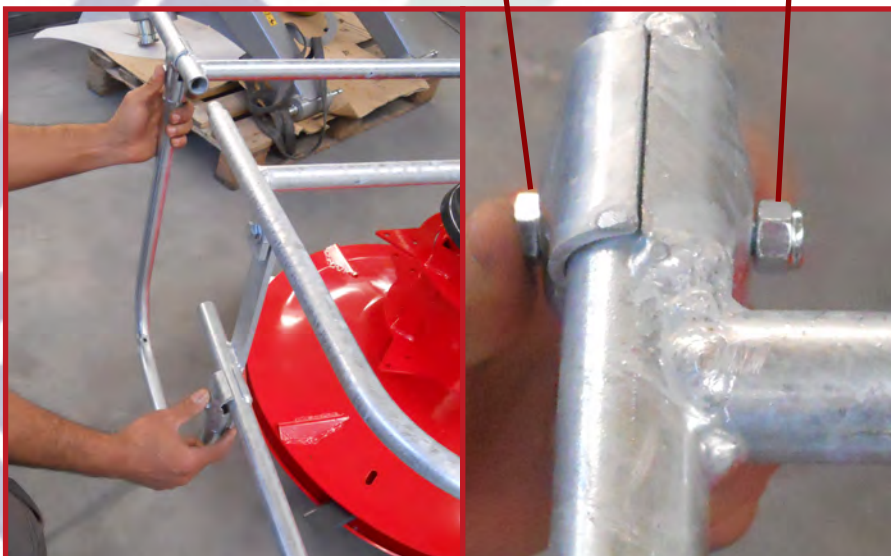


10. Insert in all the holes screws, washers and nuts.



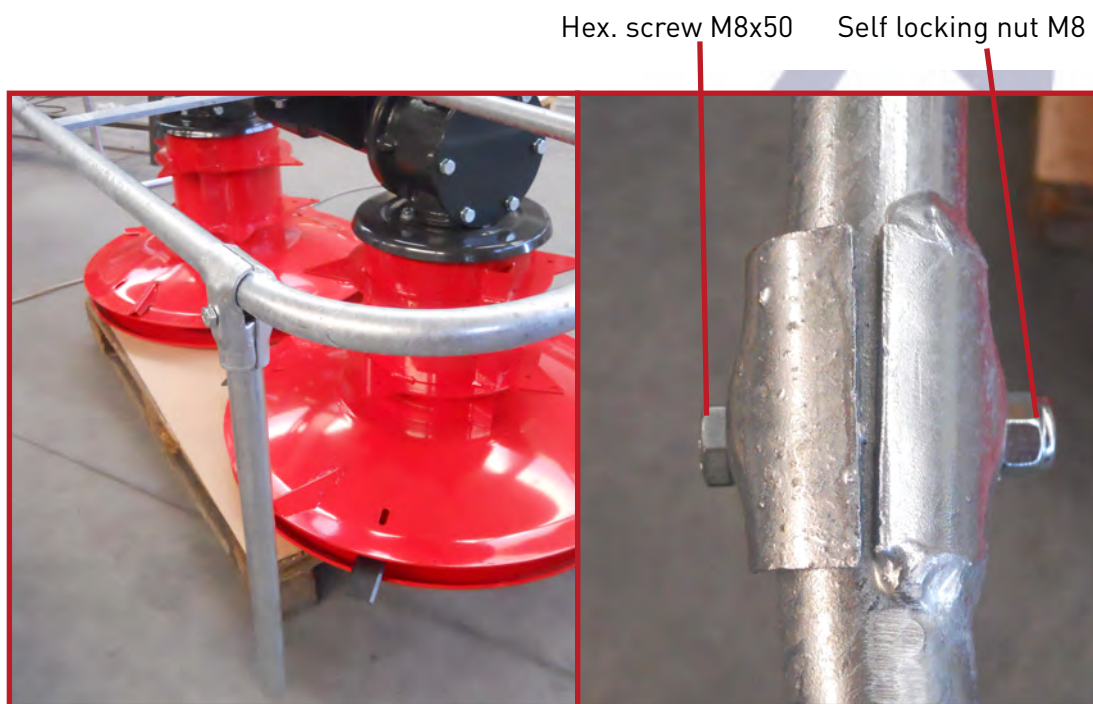
- 11.** Tighten all the locking of the guards.

Hex. screw M8x50 Self locking nut M8



- 12.** Take the U tube and fix them to the side of the guards with screws and nuts.

SARRACENIA 180 hydraulic version

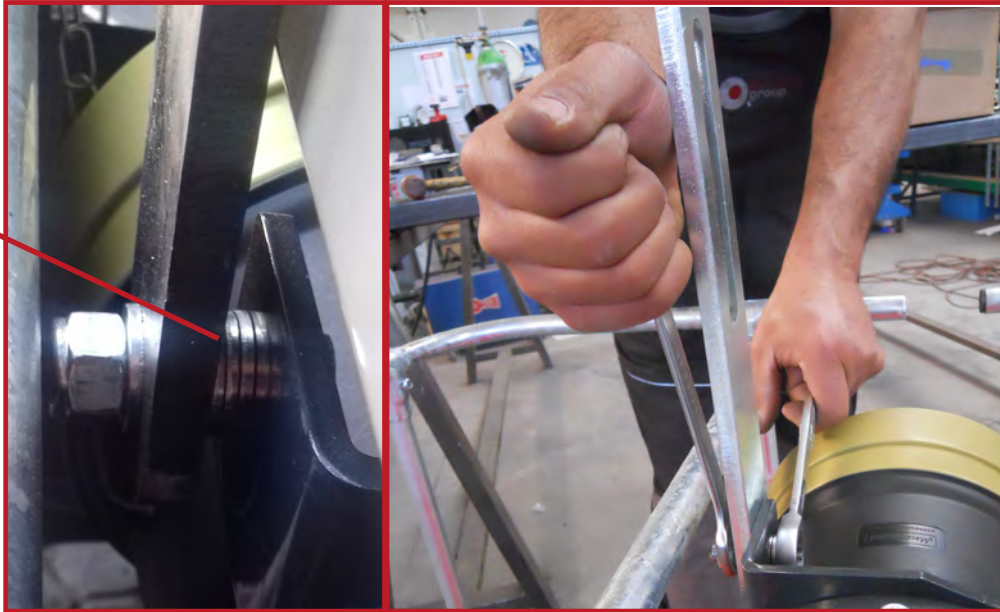


13. Take the guards pipe and fix them to the side of the protections with screws and nuts.



14. Tighten the locking of the guards pipe.

Flat Washer
D16
x 4



15. Rotate the locking tilting plate in the position shown in the picture and tighten the locking. (4 washer D16)



16. Take the plastic cover and put it on the guards.

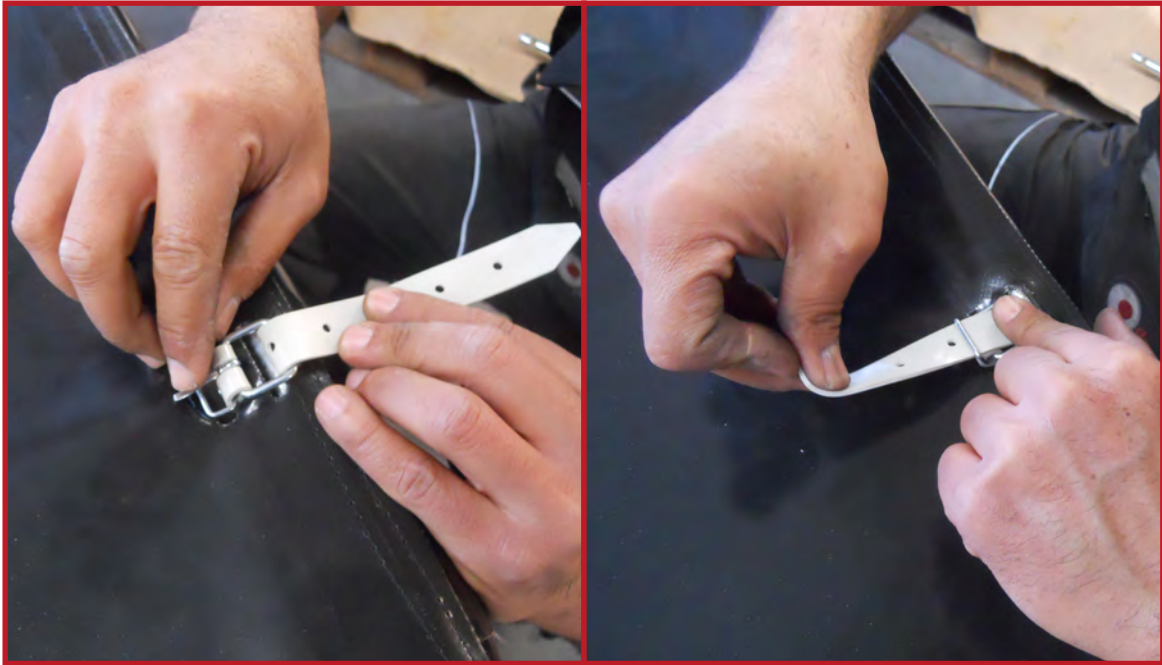
SARRACENIA 180 hydraulic version



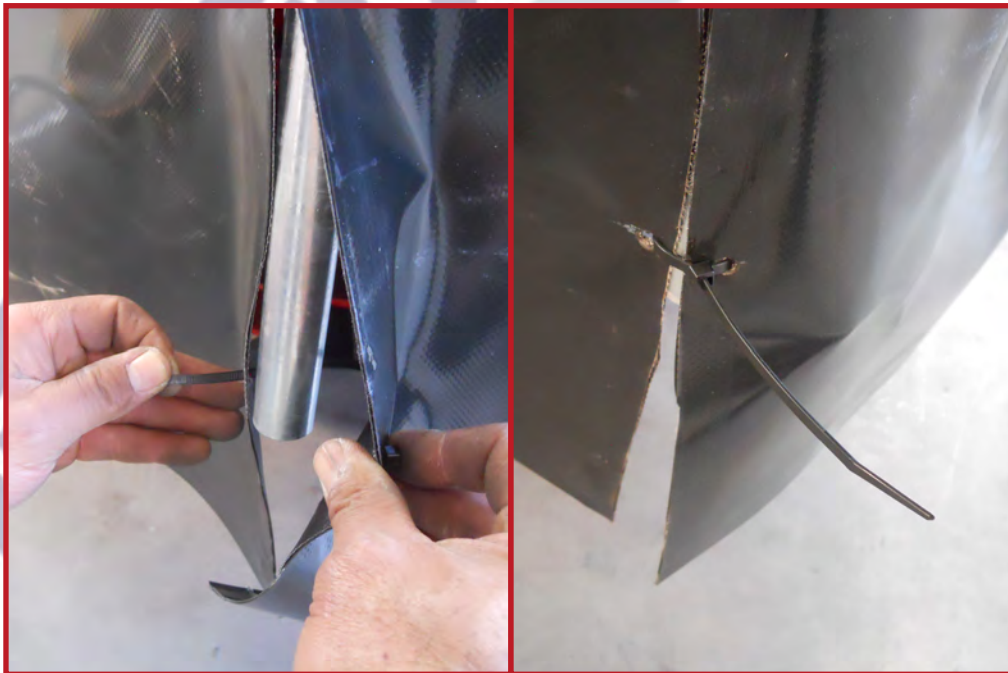
17. Close the metal hooks of the plastic cover.



18. Into the PTO guard you will find the plastic bag containing leather laces.



19. Insert them around the tube and the plastic cover and lock them.



20. Take the two black zip tie and lock the plastic cover like shown in the photo.

SARRACENIA 180 hydraulic version



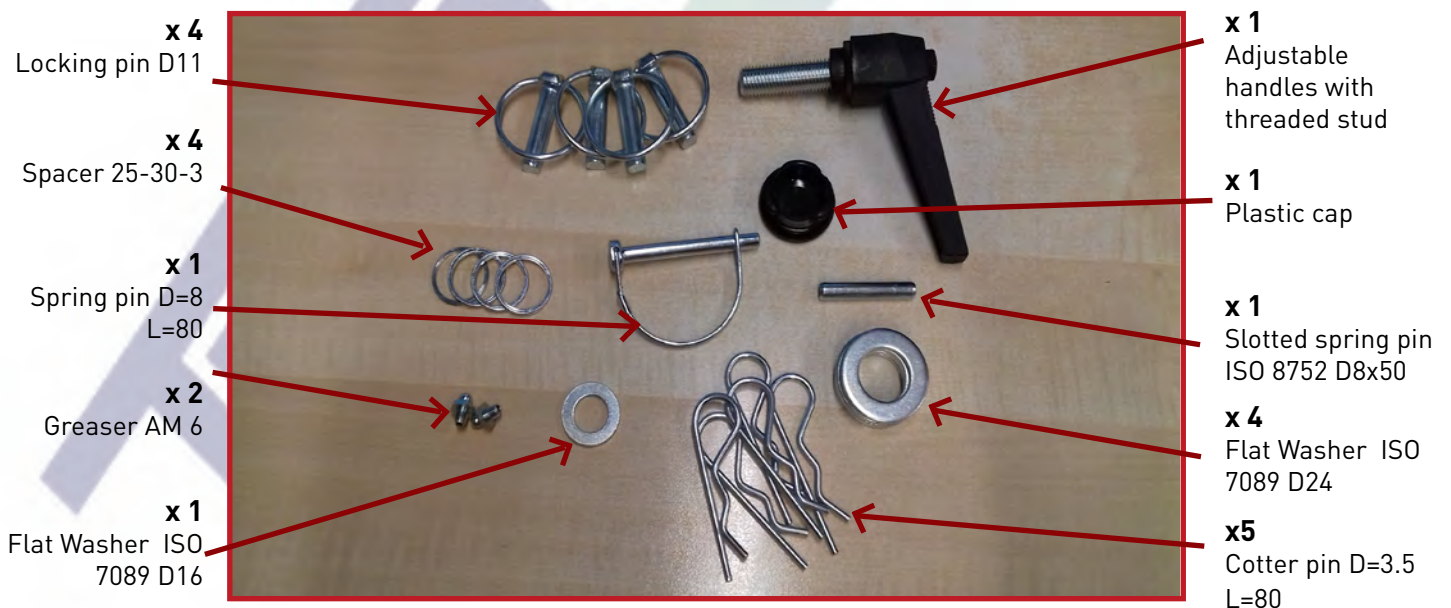
21. Check if the result matches with the photo



22. Raise the 3 point hitch and lay it on a support **high 30 cm** like shown in the picture.

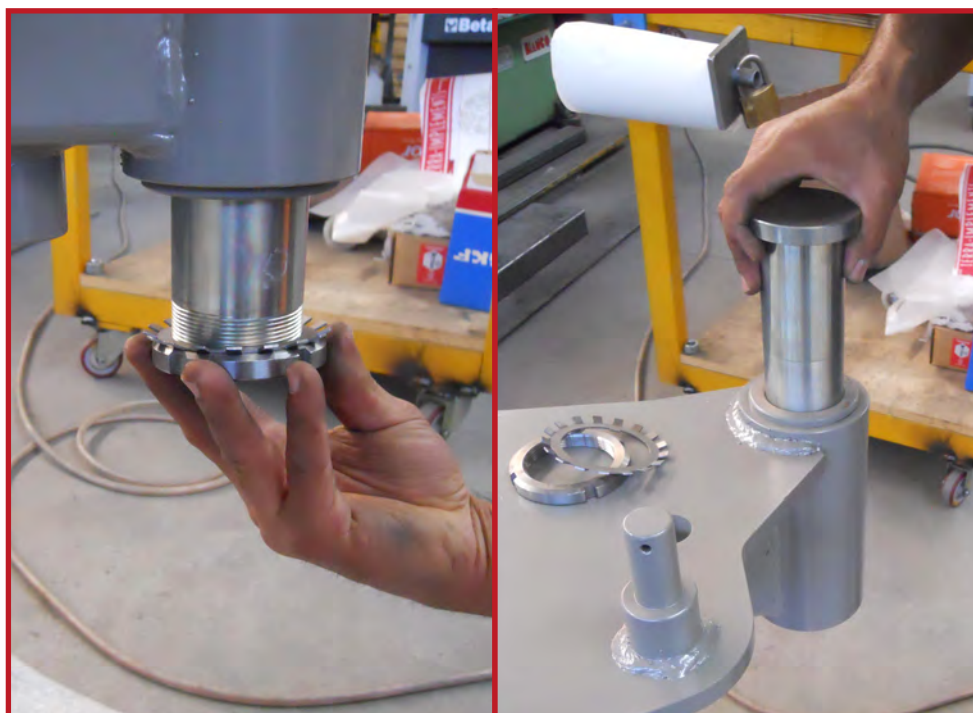


23. Take the plastic bag 3.026.0015 and open it.

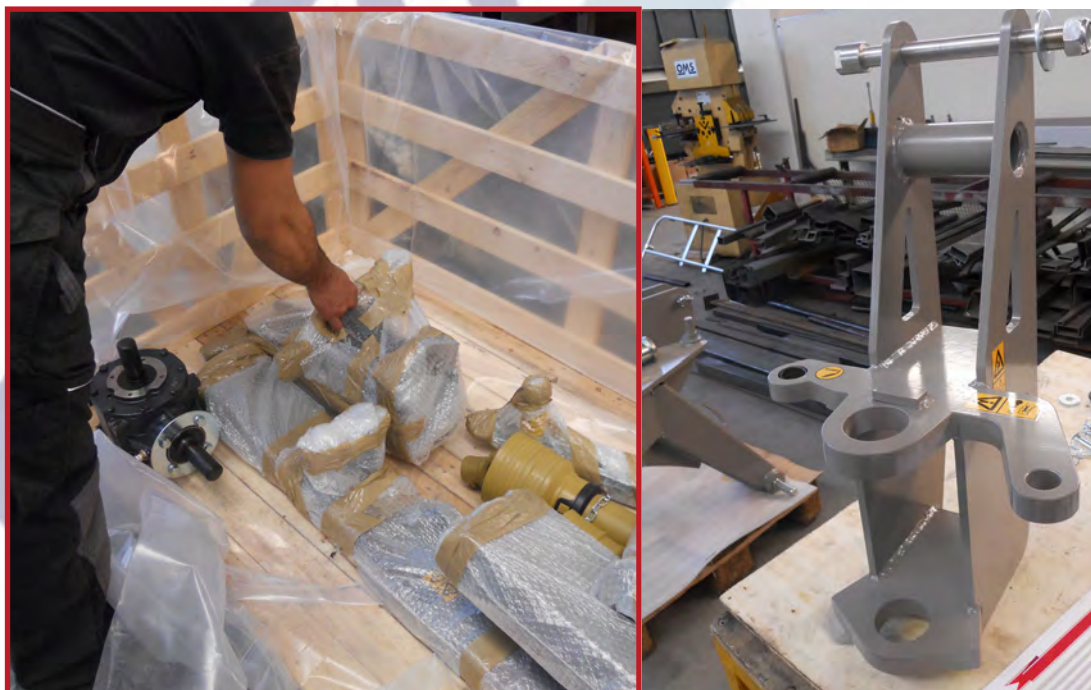


24. Screws necessary for 3rd point assembly.

SARRACENIA 180 hydraulic version



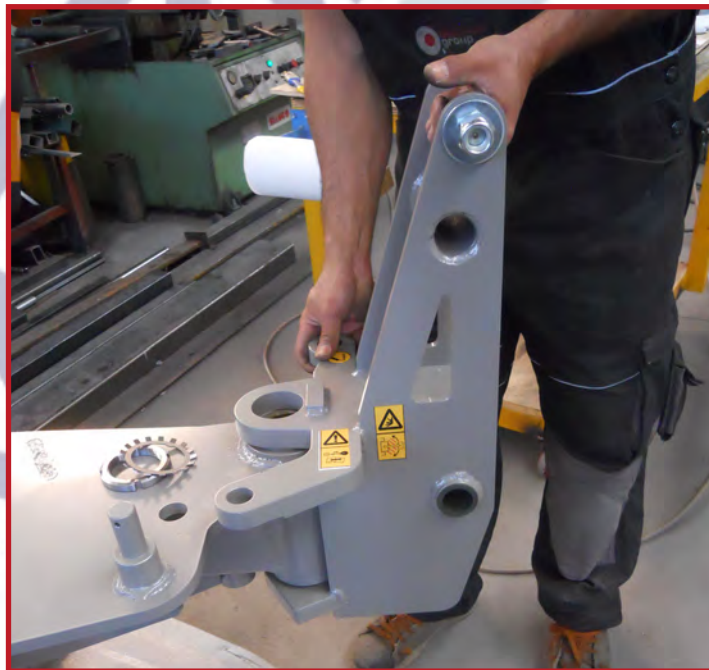
25. Remove the safety washer and the ring nut for extract the pin.



26. Take the pivoting assembly from the wooden crate.



27. Insert the greaser.

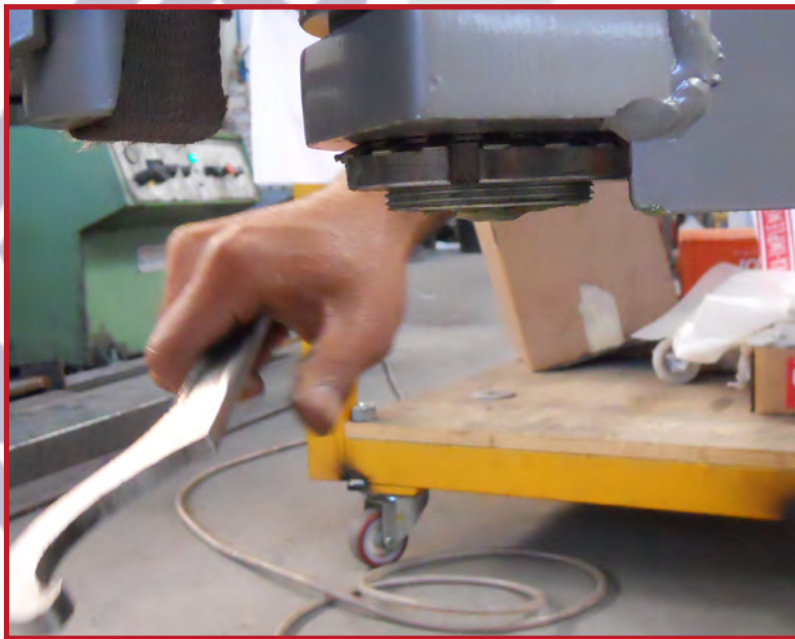


28. Position the pivoting assembly on the frame of the 3rd point like shown in the picture.

SARRACENIA 180 hydraulic version



29. Insert the pin.



30. Insert the safety washer and screw the ring nut on the pin.



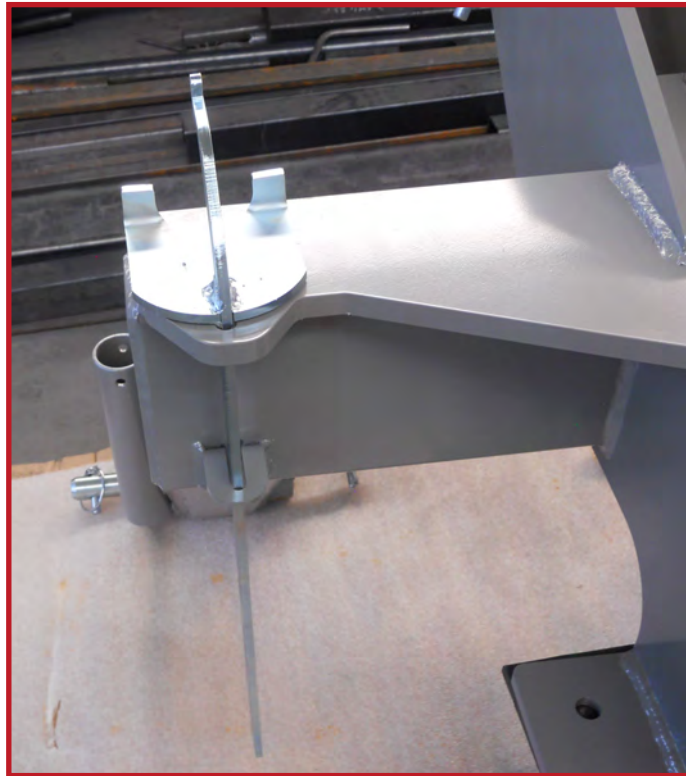
- 31.** Bend the tooth of the safety washer on the ring nut like shown in the picture.

Locking pin D11



- 32.** Insert the locking pins in the lower pins of the 3rd point.

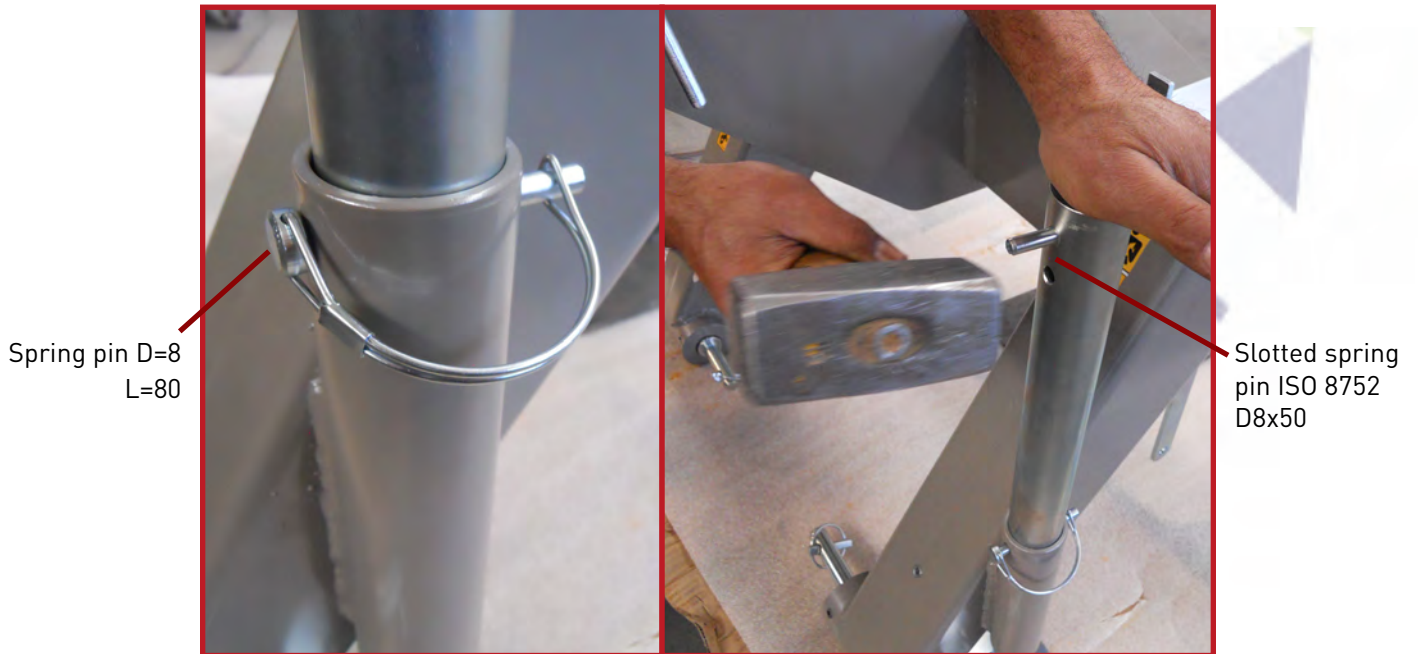
SARRACENIA 180 hydraulic version



33. Insert the tool to release the blades like shown in the picture.



34. Take the foot and insert the plastic cap; position the foot in the 3rd point.



- 35.** Insert in the foot the spring pin and the slotted spring pin like shown in the picture.



- 36.** Take the plastic bag 3.026.0011.

SARRACENIA 180 hydraulic version



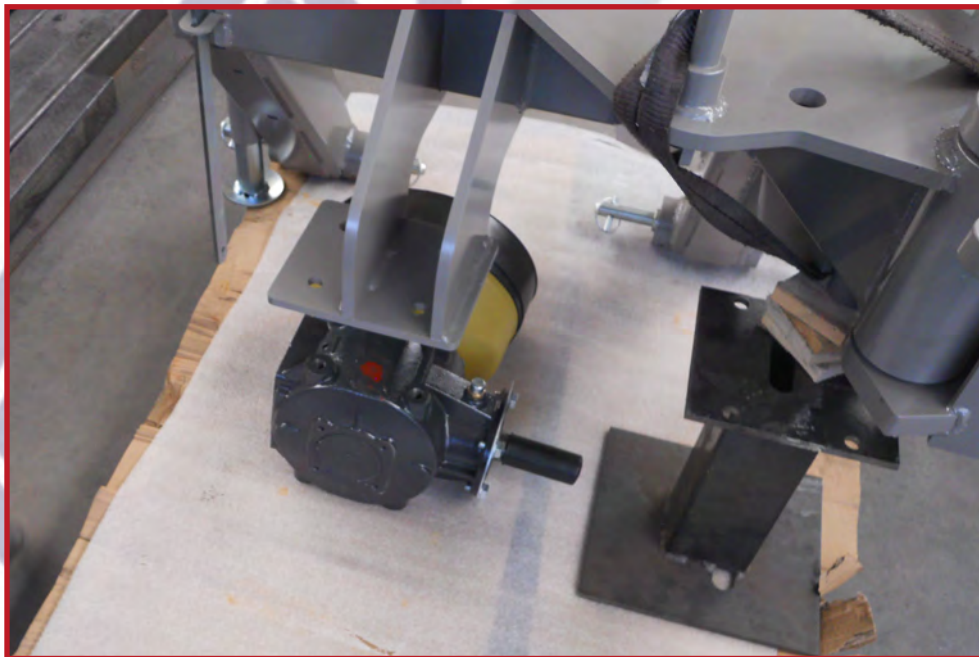
37. Screws necessary for gearbox's assembly.



38. Take the PTO guard, position it on the gearbox and insert the washers and the screws.



39. Check if the result matches to the photo.

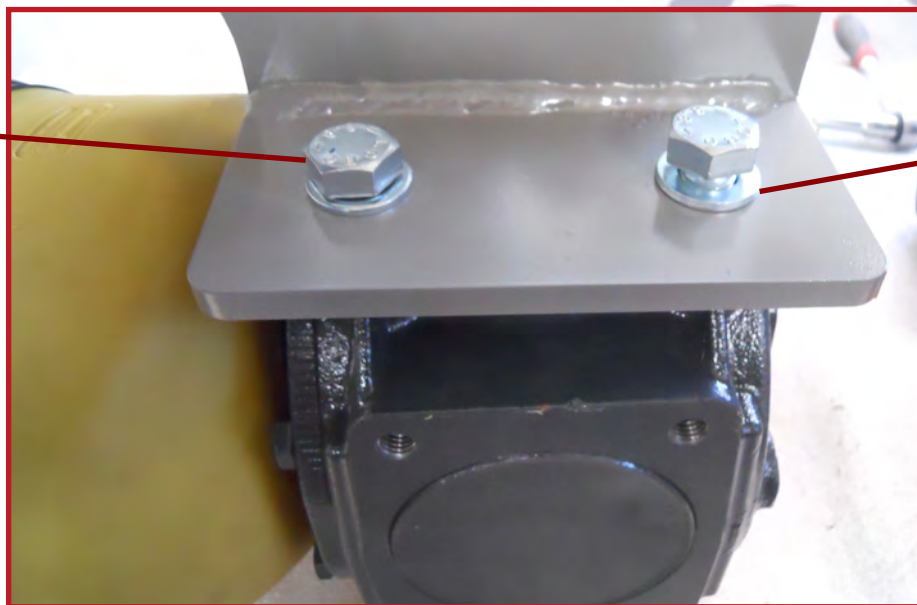


40. Position the gearbox like shown in the picture.

SARRACENIA 180 hydraulic version

Hex. Screw
M16x30

Flat Washer D16



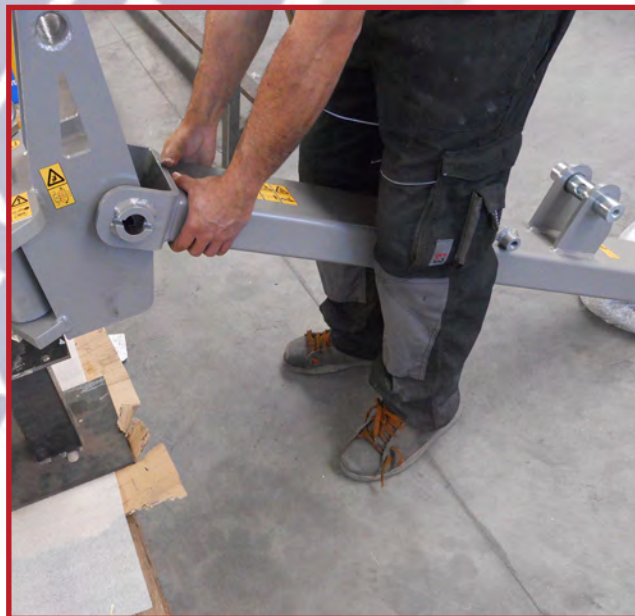
41. Screw it at the 3rd point and tighten the locking screws.



42. Take the support beam package and open it.

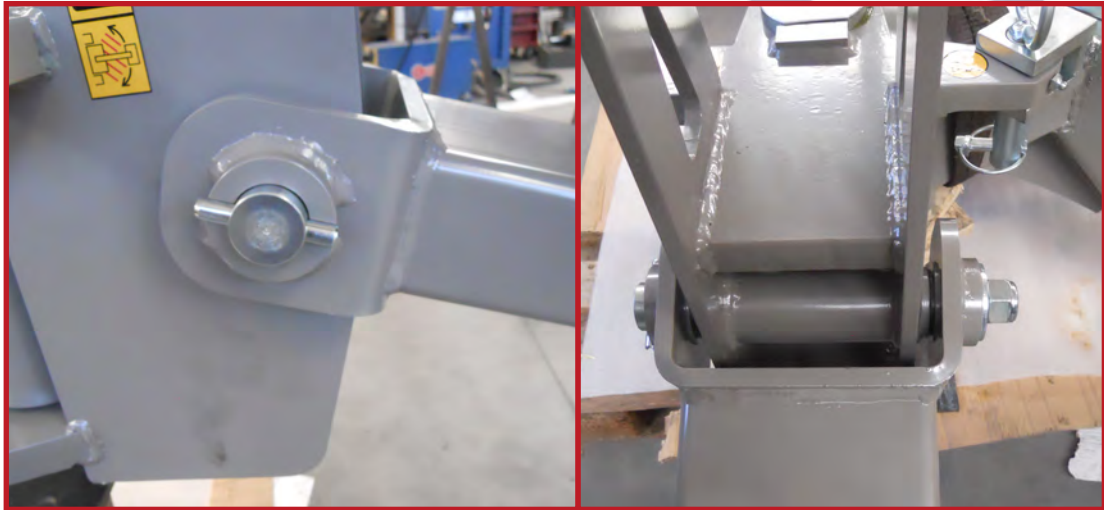


43. Remove the pin from the support beam.



44. Position the support beam near the pivoting assembly by matching the holes.

SARRACENIA 180 hydraulic version



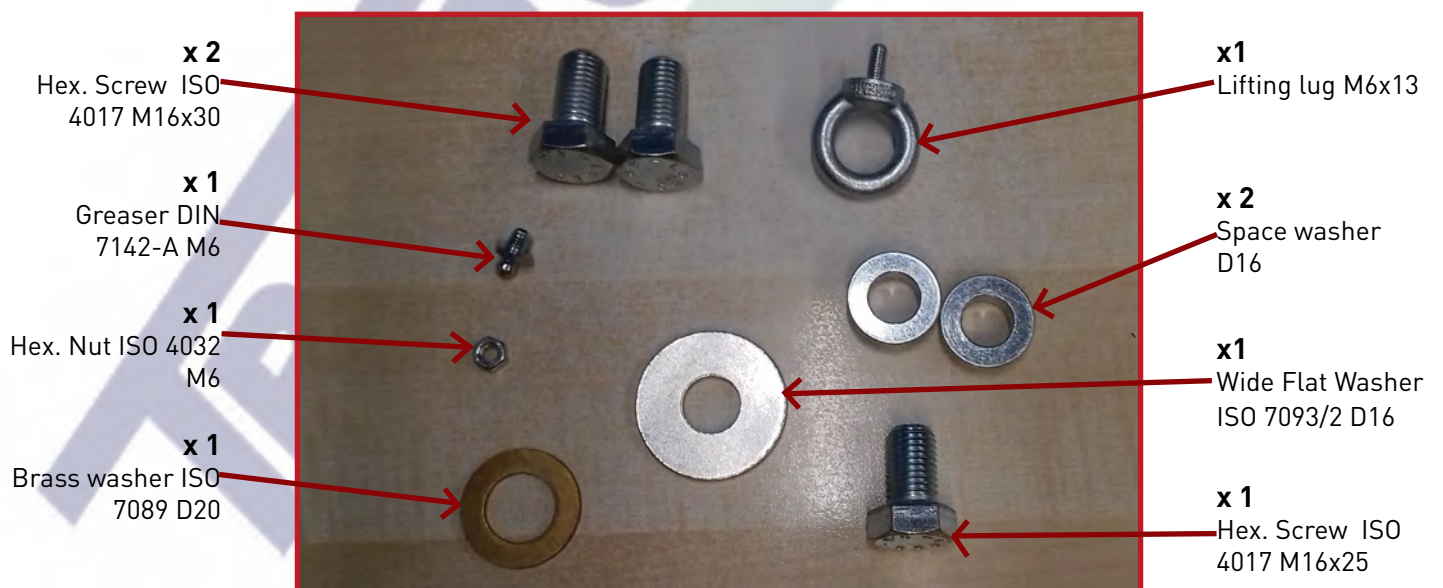
45. Reinsert the pin in the support beam and tighten the locking.



46. Take the springs package and open it.



47. Take and open the plastic bag 3.026.0016.



48. Screws necessary for suspension group's assembly.

SARRACENIA 180 hydraulic version



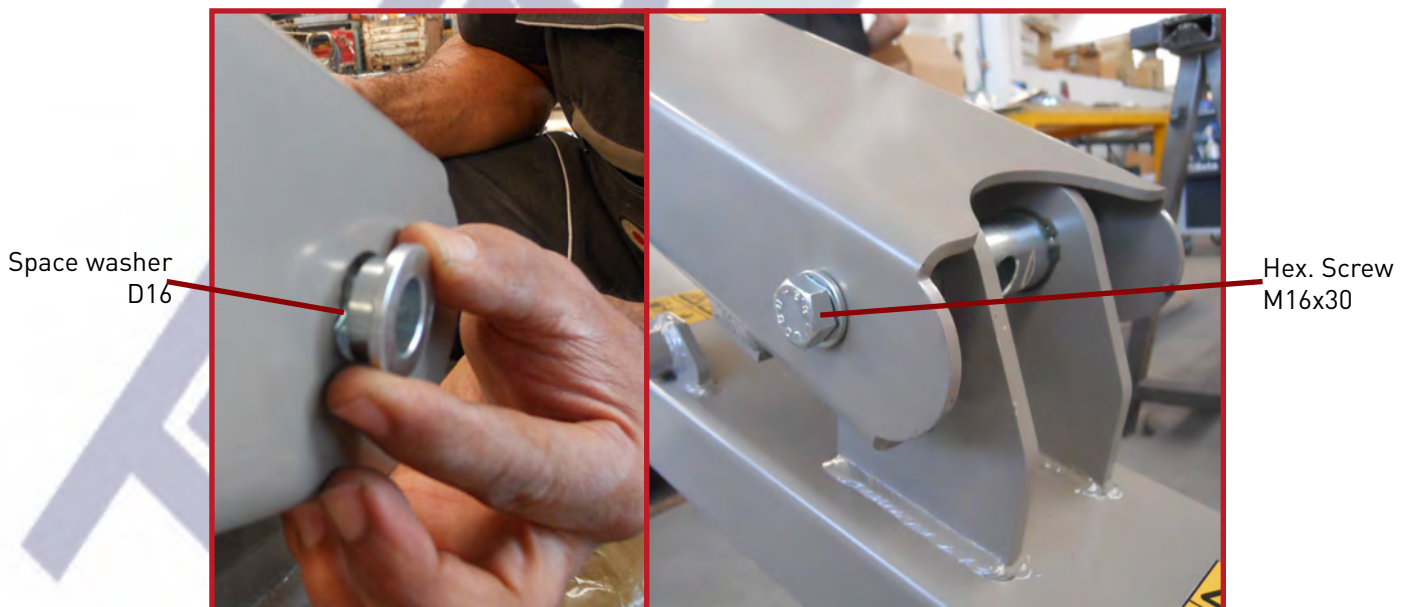
49. Take the upper "C" plate package and open it.



50. Insert the spring assembly in the upper "C" plate like shown in the photo.

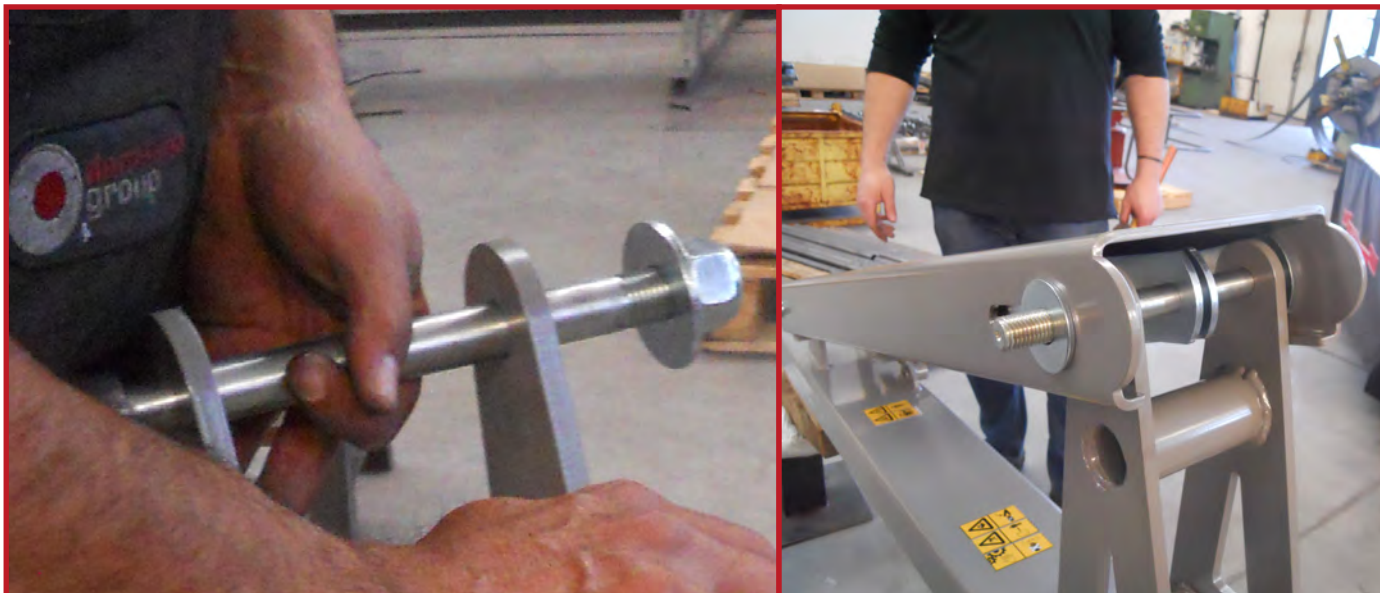


- 51.** Position the upper "C" plate on the suspension group like shown in the picture.



- 52.** Insert on both sides of the plate the spacer washers and the screws.

SARRACENIA 180 hydraulic version



- 53.** Extract the pin of the pivoting assembly and insert it in the suspension group like shown in the picture.



- 54.** Leave at least 1 mm of space between the washer and the plate to allow the sliding and insert the grease in the slot.



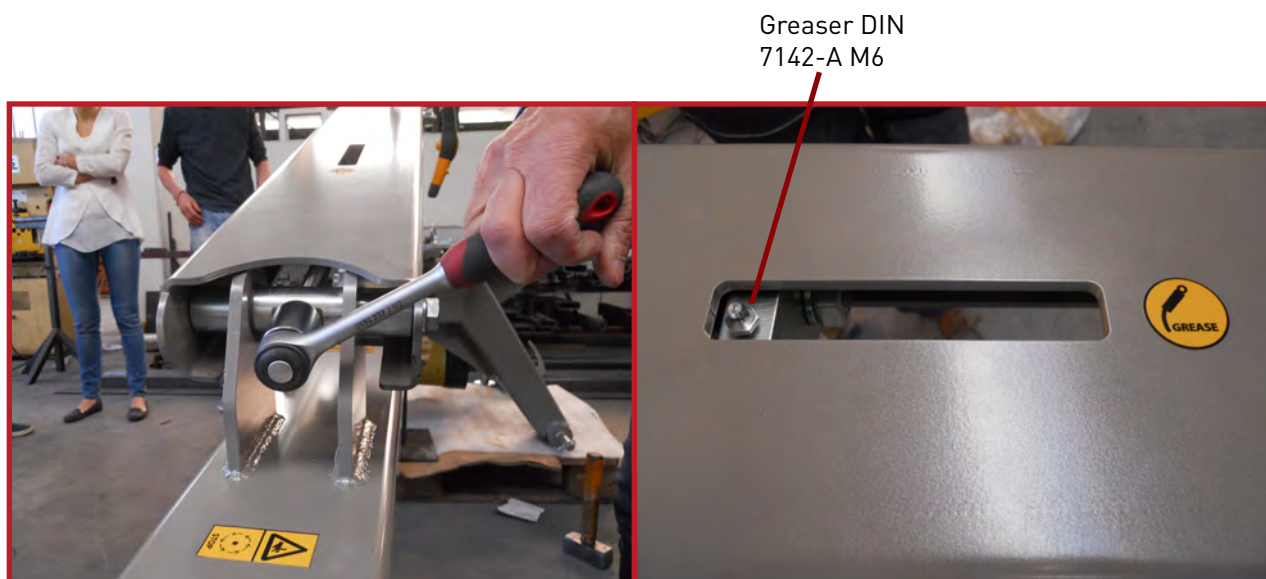
Brass washer
D20

55. Insert the brass washer in the threaded bar.



56. Insert the threaded bar in the hole adding some grease.

SARRACENIA 180 hydraulic version



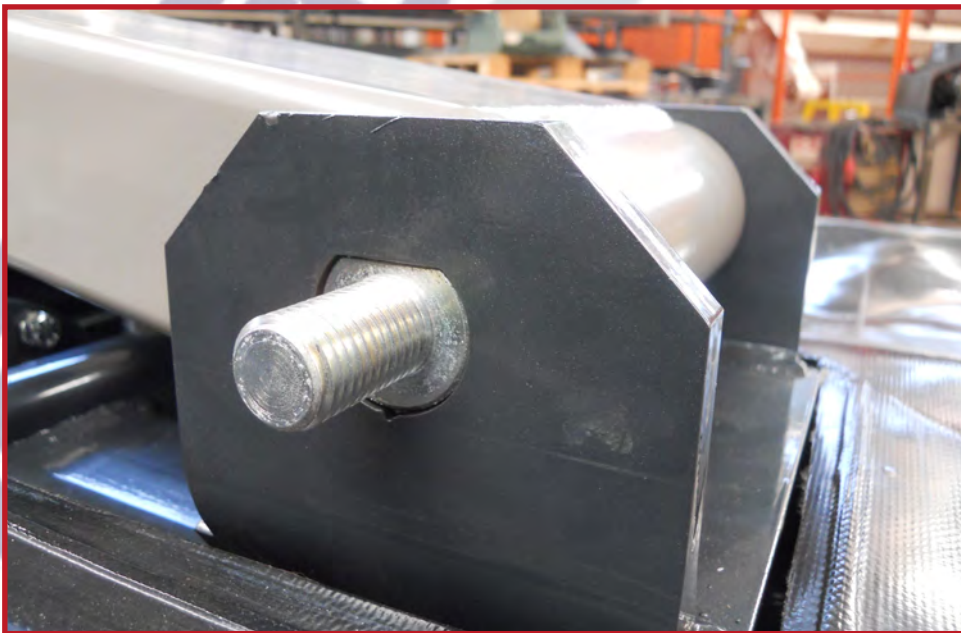
- 57.** Screw the threaded bar and insert the greaser when the plate arrive at the upper slot of the upper "C" plate.



- 58.** Take the locking hook spring from the box and position it on the plate inserting washer and screw.

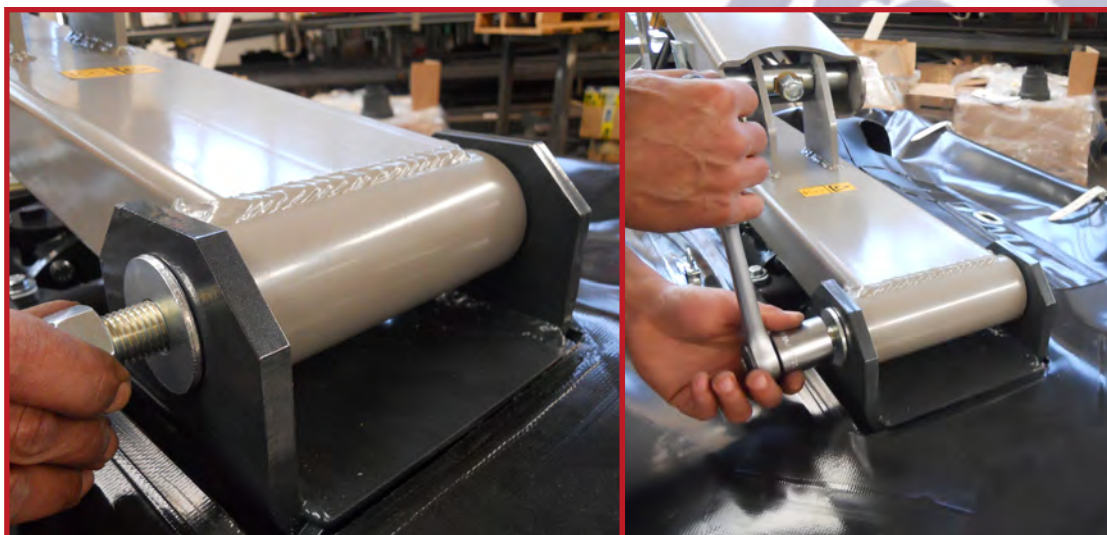


59. Lift the connecting frame.



60. Position it close to the protection's assembly, remove and re insert the pin of the guards like shown in the picture.

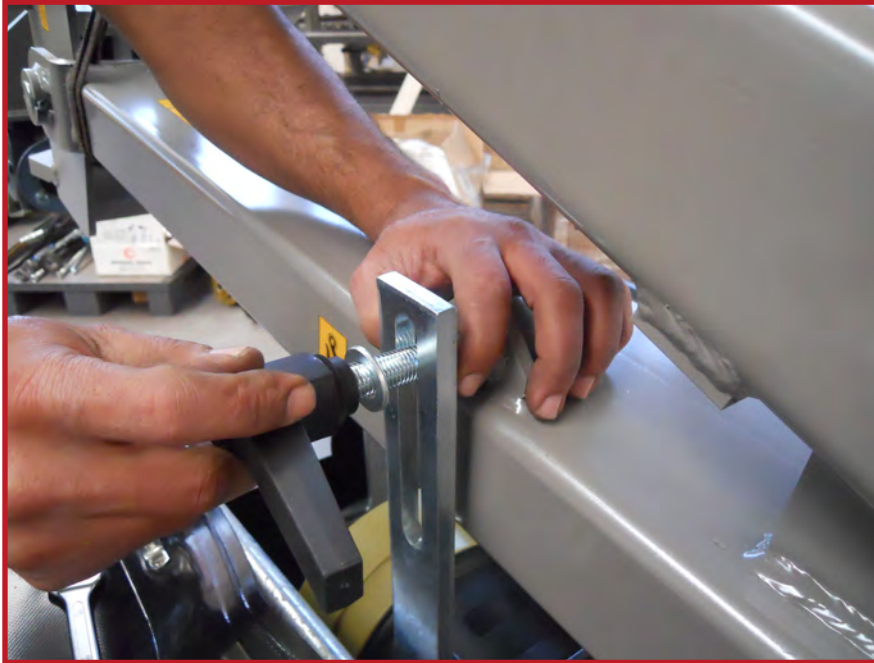
SARRACENIA 180 hydraulic version



61. Reinsert the washer and the nut and lock them.



62. Take the adjustable handles with threaded stud and its washer.



63. Position it in the hole of the locking tilting plate and screw it.



64. Take from the box the canister and take inside its screws and washers.

SARRACENIA 180 hydraulic version



- 65.** Position it like shown in the picture and screw the screws with washers.



- 66.** Check if the result matches to the photo.

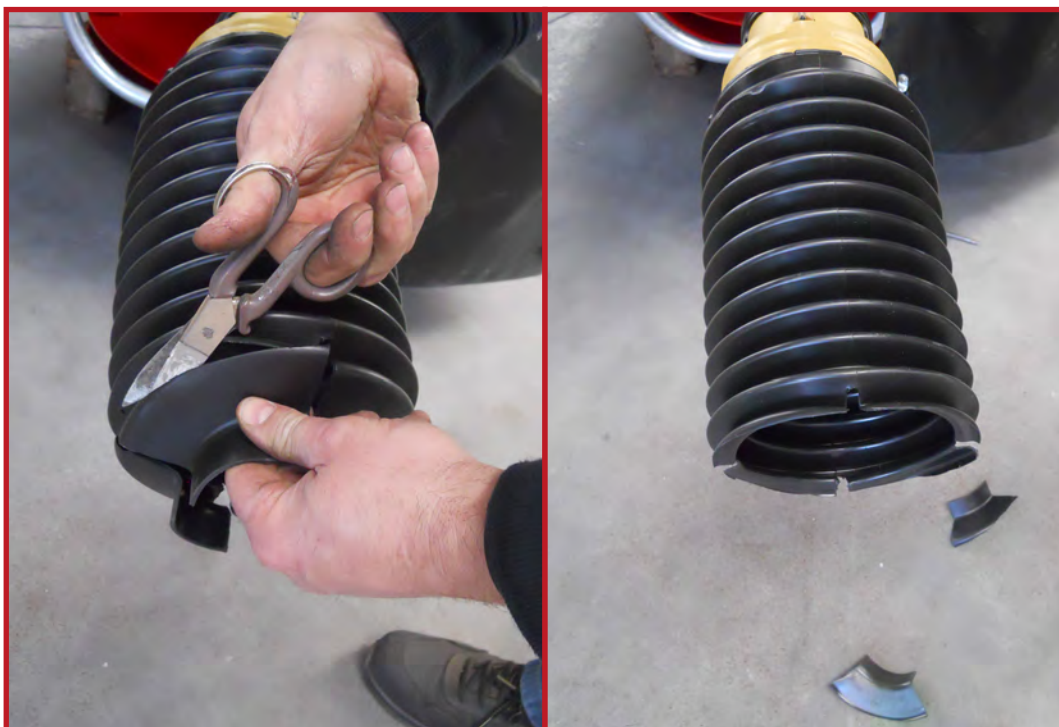


67. Take from the boxes the chain and hook it to the pins.

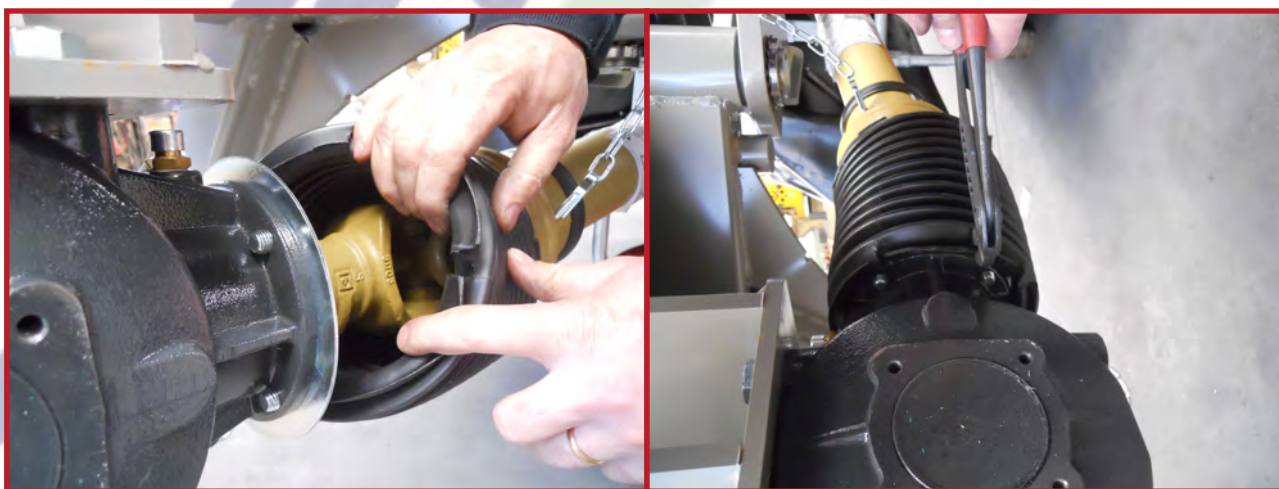


68. Take the intermediate PTO shaft and attach it to the machine.

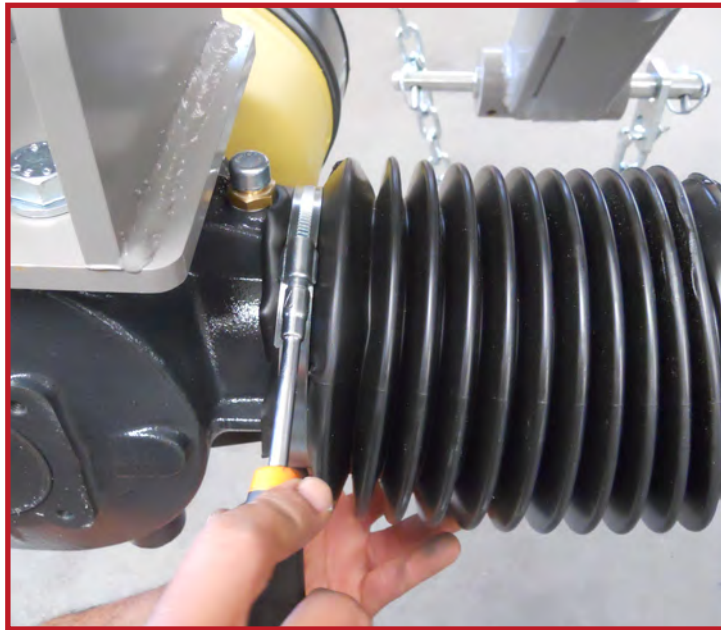
SARRACENIA 180 hydraulic version



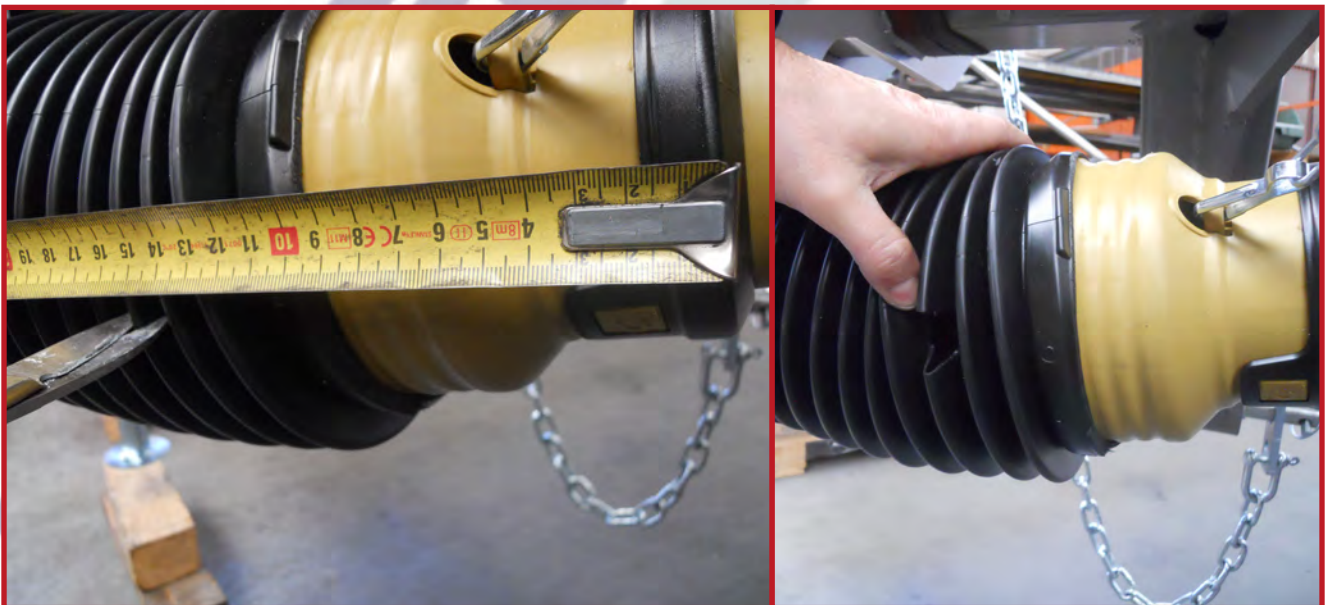
69. Cut like shown in the picture the rubber bellows.



70. Attach the PTO shaft at the side of the gearbox and to overlap it to the circular plate.

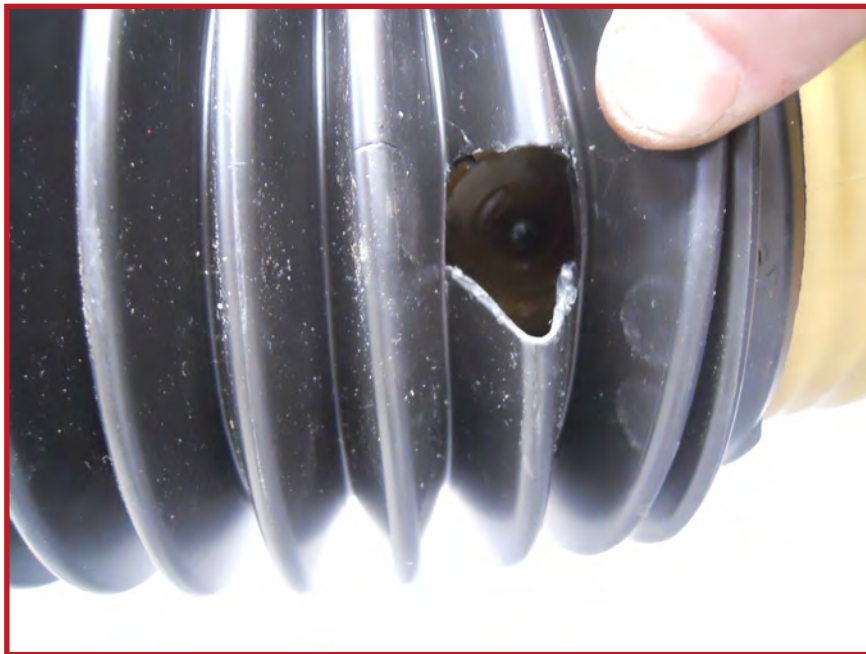


71. Insert around the rubber bellows the zip tie and lock it.



72. Make a hole on the 3° ring of the rubber bellows like shown in the picture.

SARRACENIA 180 hydraulic version



73. Greaser of the PTO shaft.



74. Take the other PTO shaft and attach to the gearbox.

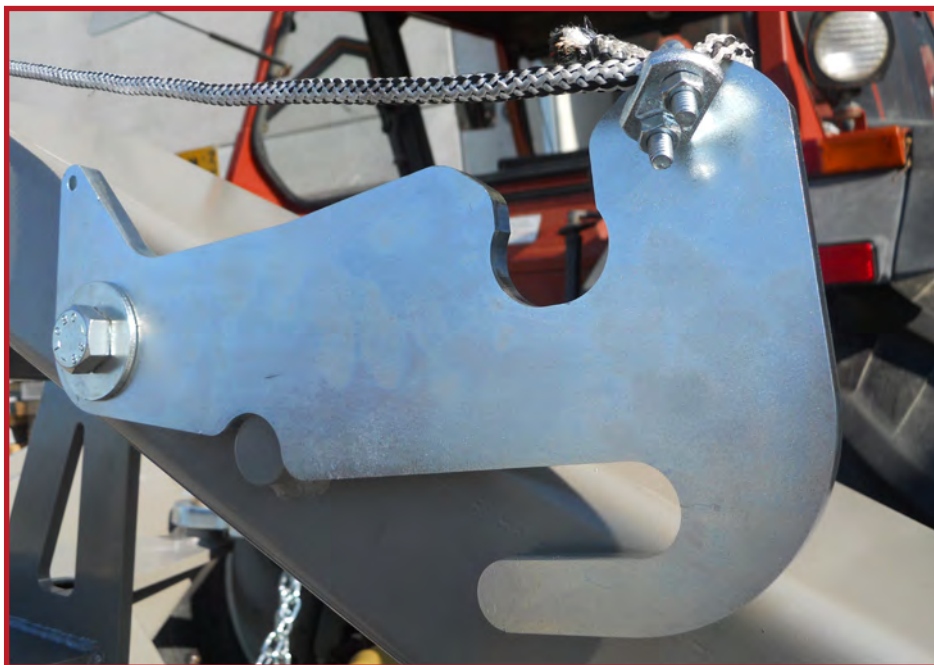


75. Lift the machine and attach it to the tractor.



76. Sarracenia 180 Manual version assembled.

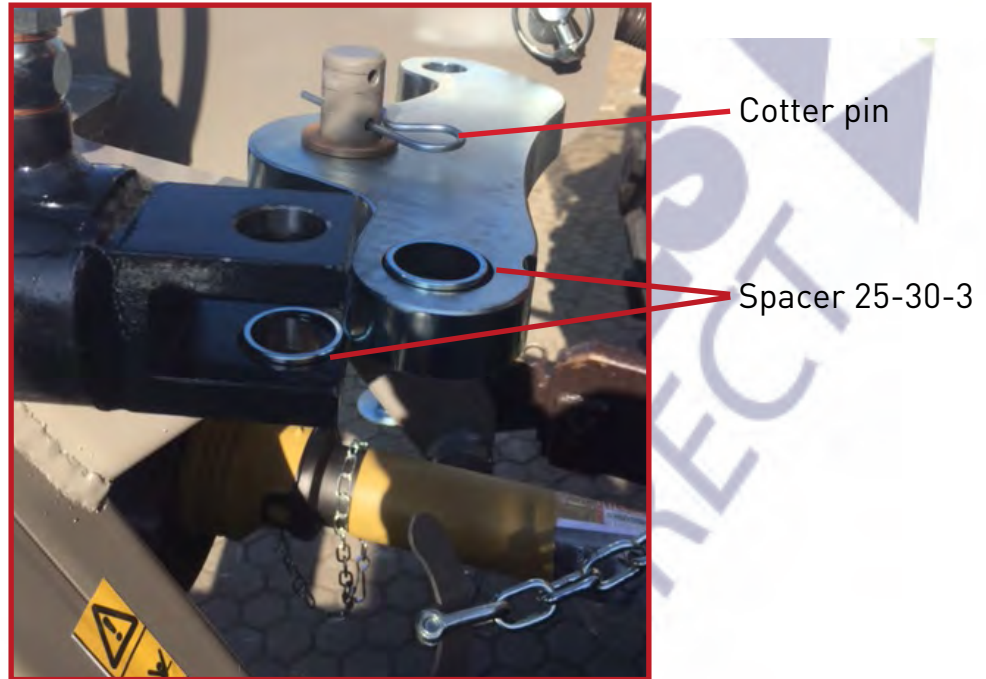
SARRACENIA 180 hydraulic version



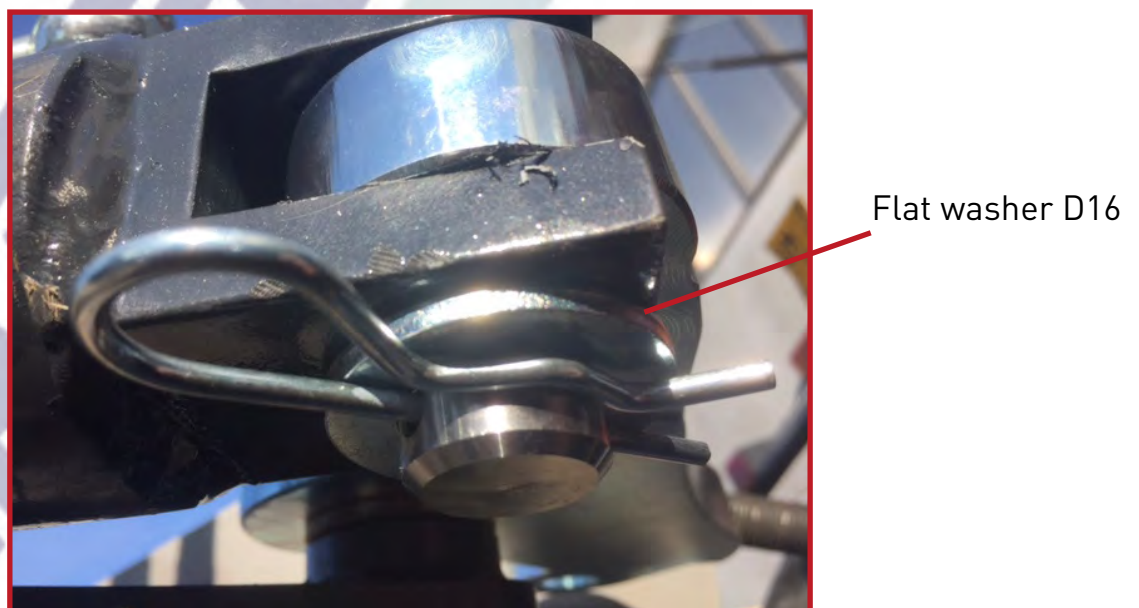
- 77.** Insert the rope with its clamp on the Locking hook spring like shown in the picture.



- 78.** Insert the plate in the pin like shown in the picture.

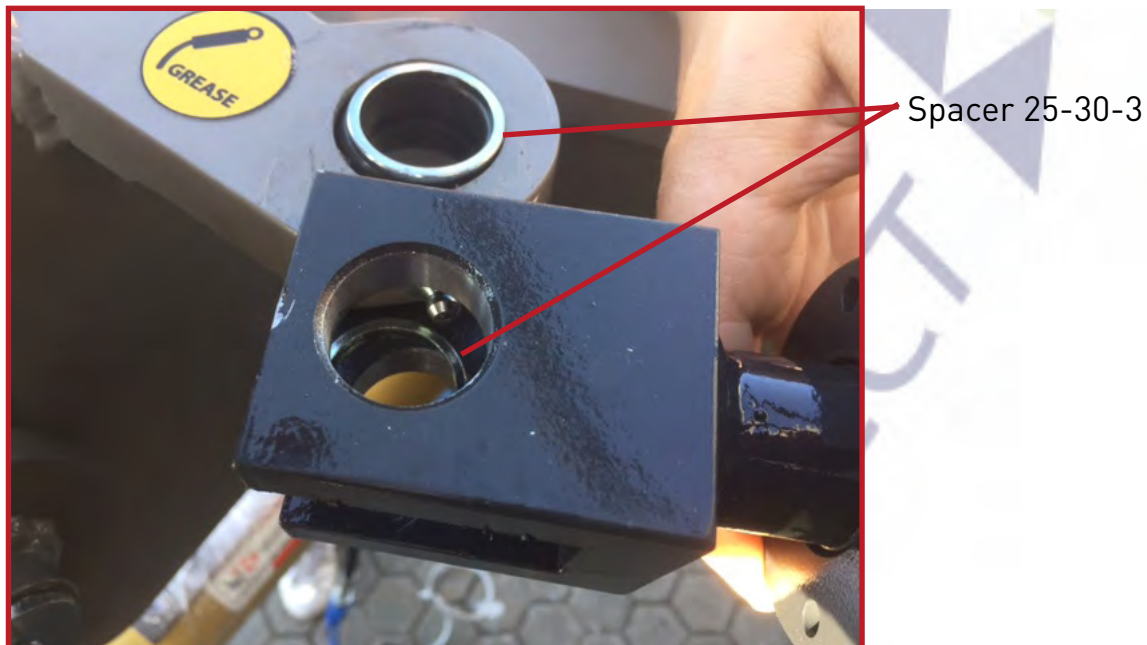


- 79.** Lock the plate with the cotter pin and insert the spacer between the hydraulic cylinder and the plate like shown in the picture.

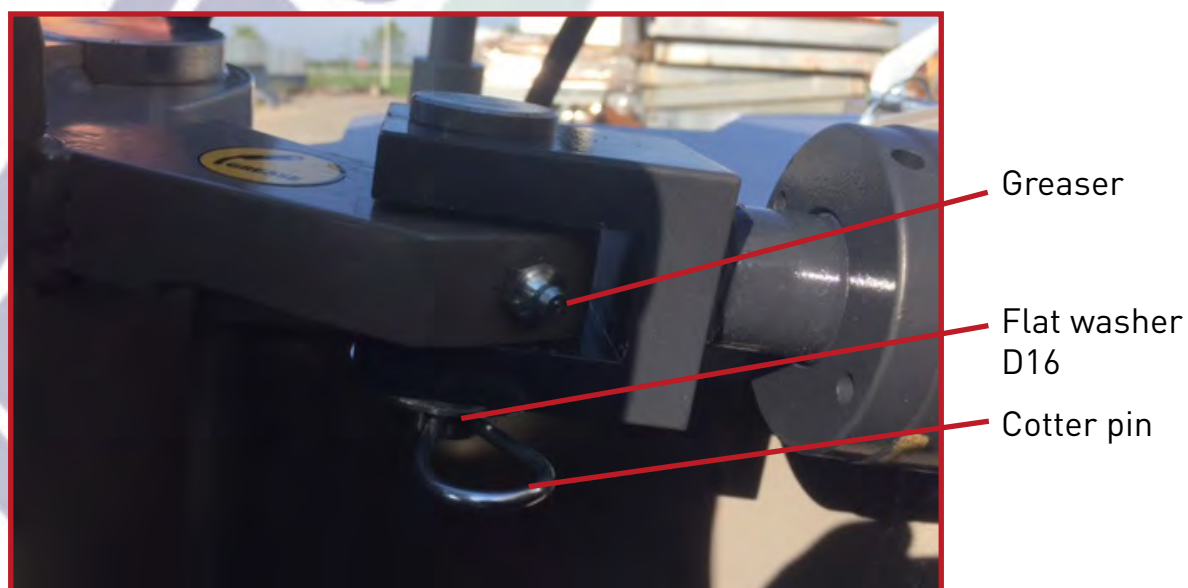


- 80.** Insert the flat washer and lock the hydraulic cylinder with the cotter pin.

SARRACENIA 180 hydraulic version



81. Insert the spacer like shown in the picture and insert the cylinder on the plate.



81. Insert the flat washer and lock the hydraulic cylinder with the cotter pin and insert the greaser.



- 83.** Insert the breakaway like shown in the picture.
Regulate the spring tension (max. compression= 5,5 cm)



- 84.** Lock the breakaway with the cotter pin.

SARRACENIA 180 hydraulic version



85. Sarracenia 180 Hydraulic version assembled.



CONTACT

service@terra-implements.it
tel. +39 0171 4142
www.terra-implements.it
ITALY