



Parts Manual

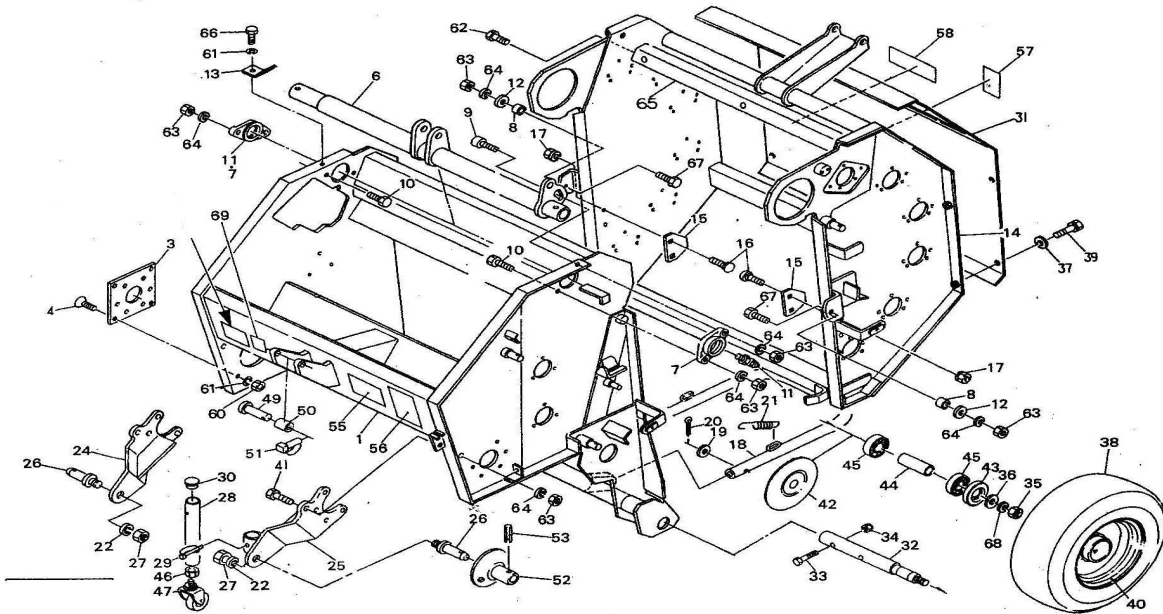
Model: IBEX TX31 Mini Round Baler



ibexequipment.com
833-888-IBEX

YK0850M round baler

frame assy

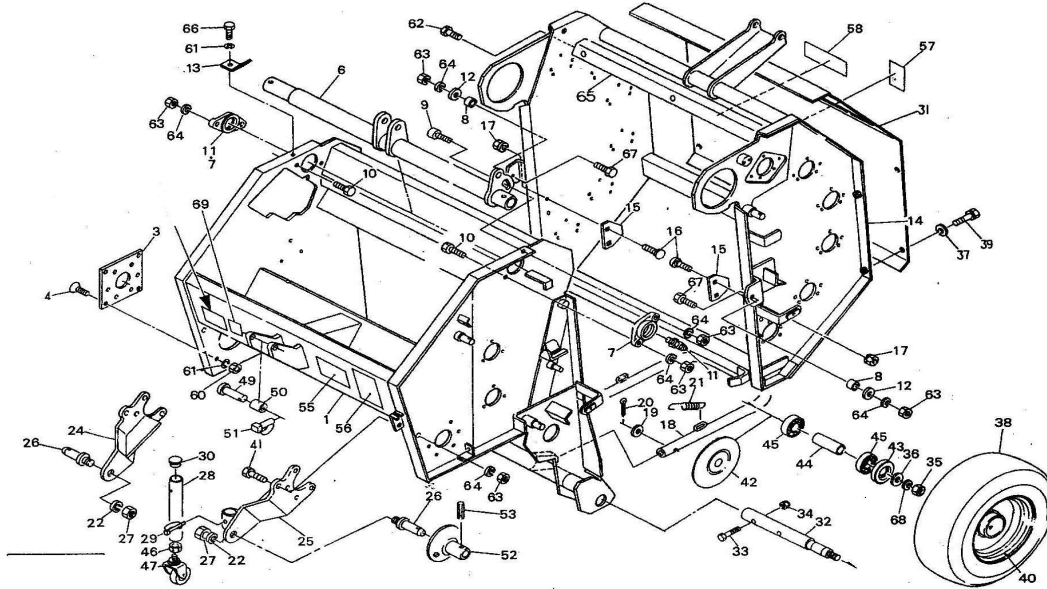


No.	Drawing No.	name	quantity	No.	Drawing No.	name	quantity
1	YK50.1-0 1-00	YK0850 front frame CP	1	26	YK70.1-13	Connection pin	2
2	YK70.1-0 1-00	YK0870 front frame CP	1	27	GB6710-86	Hexagon nut M22XI.5(8.8)	2
3	YK70.1-0 2	Connecting plate	1	28	YK70.1-14 -00	Supporting rod CP; 450A	1
4	GB5786-8 6	Bolt M10×25 (8.8)	4	29	HB4187-19 89	bayonet pin 9	1
5	YK50.1-0 3-00	pivot pipe CP YK0850	1	30	YK70.1-21	cover	1
6	YK70.1-0 3-00	pivot pipe CP YK0870	1	31	YK50.1-15	YK0850 Rear cover	1
7	YK70.1-0 4	top cover	2		YK70.1-15	YK0870 Rear cover	1
8	YK70.1-0 5	sleeve	2	32	YK70.1-16	wheel axis	2
9	GB70.1-2 000T	HEXAGON SOCKET HEAD SCREW M12*30(10.9)	1	33	GB5786-86	Bolt M12×70 (8.8)	2

10	GB5786-86	Bolt M12×30 (8.8)	3	34	GB6710-86	Nylon locking nut M12	2
11	GB1152-79	grease nipple ONB6 M6×1	2	35	GB6710-86	HEXagon NUT M14	2
12	GB97.1-85	washer 12.5×3.2	2	36	GB860-87	Washer 14	4
13	YK70.1-06	Hanging plate	1	37	GB97.1-85	Flat washer 8	9
14	YK50.1-07-00	rear frame CP YK0850	1	38	GB1192-82 (400-12)	Tire 5.70/5.00-8	2
	YK70.1-07-00	rear frame CP YK0870	1	39	GB5786-86	Bolt M8×16 (8.8)	9
15	YK70.1-08	Steel plate	2	40	YK70.1-17	hub	2
16		square neck bolt M8×15 (8.8)	4	41	GB5786-86	Bolt M12×55 (8.8)	2
17	GB6710-86	Nut M8 (8.8)	4	42		cover	2
18	YK70.1-09	ejector rod CP	1	43		cover	2
19	GB97.1-85	Washer 10	1	44		bush	2
20	GB91-87	Split pin 3.2×16	1	45	GB297-84	Bearing 6205-2RS	4
21	YK70.1-10	extension spring A	2	46	GB6710-86	HEX NUT M20 (8.8)	2
22	GB93-87	spring washer 22	2	47		caster; 100	1
24	YK70.1-11-00	Connectting arm CP: R	1	49	YK70.1-18	Topper Connecting pin	1
25	YK70.1-12-00	Connecting arm CP: L	1				1

YK0850M round baler

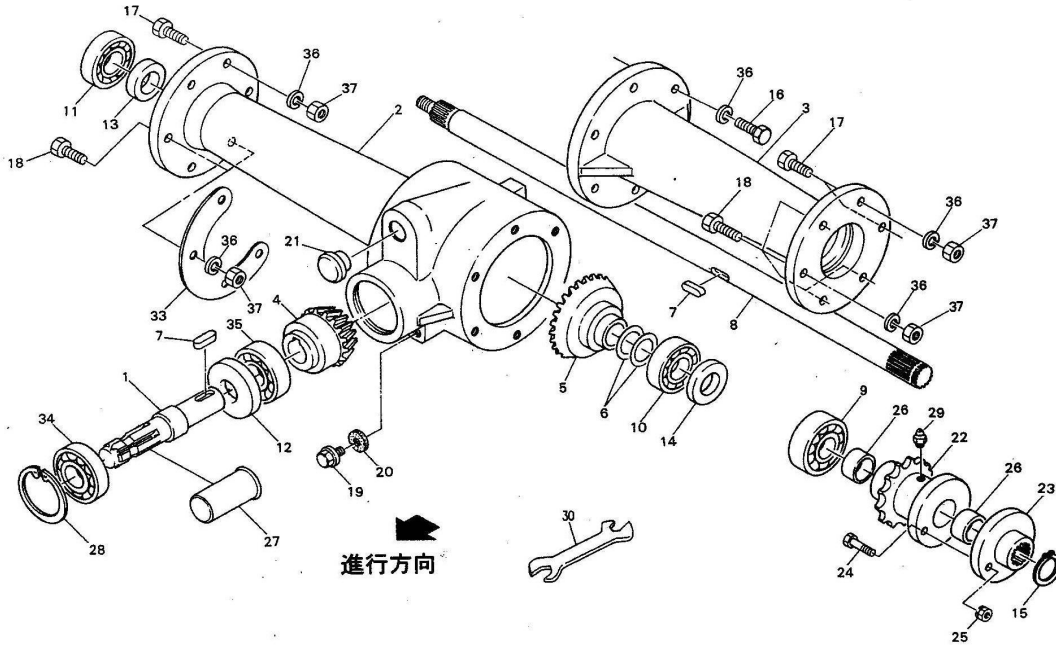
frame assy



No.	Drawing No.	name	quantity	No.	Drawing No.	name	quantity
51	DIN11024-1973	battle pin; 9	1	65	YK70.1-19-00	Bracket CP	1
55	YK70.1-21	warning sticker	1	66	GB5786-86	Hexagon bolt M10×25 (8.8)	1
56	YK70.1-22	warning sticker	1	67	GB5786-86	Hexagon bolt M12×50 (8.8)	2
57	YK70.11-19	warning sticker	1	68	GB93-87	Spring Washer 14	2
58	YK70.1-23	Sticker: factory name	1	69	YK70.1-24	sticker: RPM	1
60	GB6710-86	hexagon nut M10 (8.8)	4		YK70.1-20-00	cover shell bracket: CP	6
61	GB93-87	spring washer 10	5		GB/T12-1988	square neck bolt : M8×20 (8.8)	10
62	GB5786-86	Bolt M8×25 (8.8)	2		GB6710-86	nut: M8 (8.8)	12
63	GB6710-86	hexagon nut M12	8		GB93-87	spring washer: 8	12
64	GB93-87	spring washer 12	8		GB1192-82(400-12)	Inner tire; 16×6.50-8	2

YK0850M round baler

gearbox assy



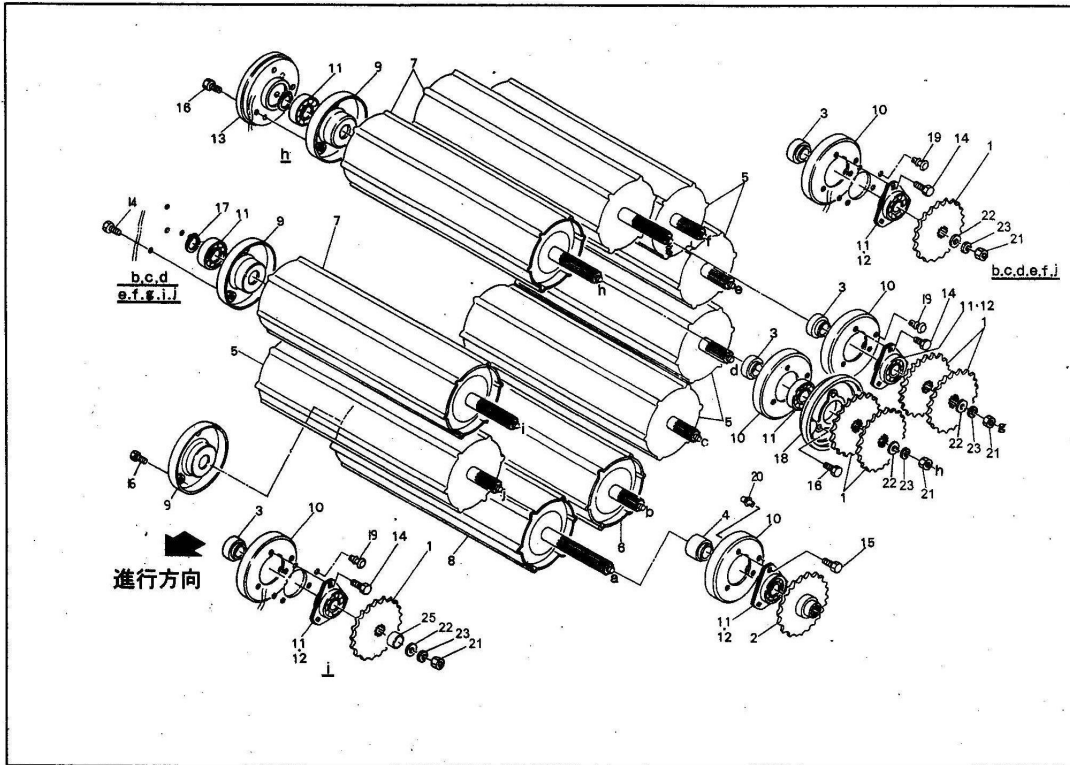
No .	Drawing No.	name	quantity	No .	Drawing No.	name	quantity
1	YK70. 2-01	input shaft	1	18	GB5786-86	Bolt M10×50 (8. 8)	8
2	YK70. 2-02	gear box	1	19		Screw plug: M10	1
3	YK70. 2-03	gear case	1	20		Screw Plug washer: 10	1
4	YK70. 2-04	bevel gear 12T	1	21	YK70. 2-10	plug	1
5	YK70. 2-05	bevel gear 22T	1	22	YK70. 2-07	Sprocket CP;16T	1
6	YK70. 2-10	shim	2	23	YK70. 2-08	flange	1

7	GB1096-79	Flat key 7×7×25 (A型)	2		24	GB5786-200 0	shear bolt ; M6×30	11
8	YK70.2-06	shaft	1		25	GB6710-86	Nut M6	11
9	GB297-84	Bearing 6305-2RS	1		26		bush	2
10	GB297-84	Bearing 6305	1		27	YK70.2-11	Shaft sleeve PIC; 35	1
11	GB297-84	Bearing 6304-2RS	1		28	GB893.1-86	Retaining washer 62	1
12	JB2600-80	oil seal D40×62×10	1		29	GB1152×79	Grease nipple ONA M6X1	1
13	JB2600-80	oil seal D25×45×7	1		33	YK70.2-09	Steel plate; 4.5	1
14	JB2600-80	oil seal D25×52×8	1		34	GB297-84	Bearing 6007-2RS	1
15	GB894.1-86	shaft retaining ring 25	1		35	GB297-84	Bearing 6206	1
16	GB5786-86	Bolt M10X25 (8.8)	6		36	GB93-87	Spring washer 10	18
17	GB5786-86	Bolt M10×35 (8.8)	4		37	GB6710-86	nut M10 (8.8)	12

YK0850M round baler

roller assy

滚筒 AS

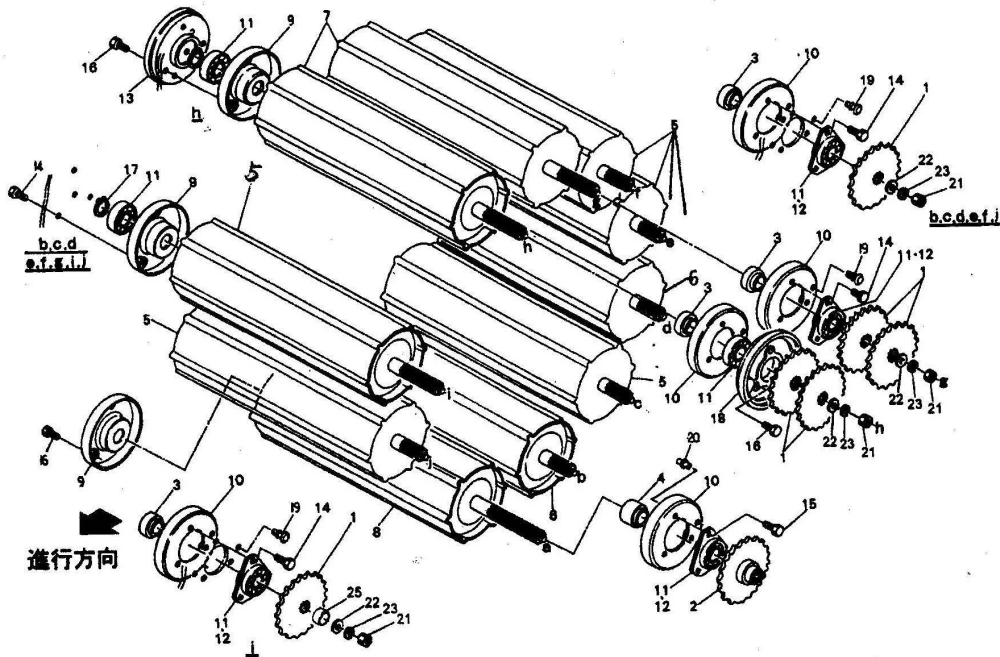


No.	Drawing No.	name	quantity	No.	Drawing No.	name	quantity
1	YK70.3-01	sprocket; 22T	11	13	YK70.3-1 1	cover plate	1
		shim; 25.5X0.6	10	14	GB5786-8 6	Bolt M8×20 (8.8)	48
2	YK70.3-02	sprocket; 22T	1	15	GB5786-8 6	boltM8×25 (8.8)	3
3	YK70.3-03	bush; A	9	16	GB5786-8 6	boltM8×30 (8.8)	9
4	YK70.3-04	bush; B	1	17	GB894.1- 86	shaft retaining ring 25	10
5	YK70.3-05 -00	Roller CP;1	5	18	YK70.3-1 2	cover plate	1

6	YK70.3-06 -00	Roller CP;2	1	19		rivet: 6×6	18
7	YK70.3-07 -00	Roller CP;3	3	20		rivet; 6×10 rivet	2
8	YK70.3-08 -00	Roller CP:4	1	21	GB6710-8 6	Nut M12	9
9	YK70.3-09 -00	flange CP	10	22	GB860-87	washer: Φ13×4.5	9
10	YK70.3-10 -00	flange CP	10	23	GB93-87	spring washer 12	9
11	GB7810-87	Spherical ball bearings CS205-2RS	20	25	YK70.3-1 3	bush	1
12	GB/T 7813-1998	bearing seat	18				

YK0850M round baler

roller assy

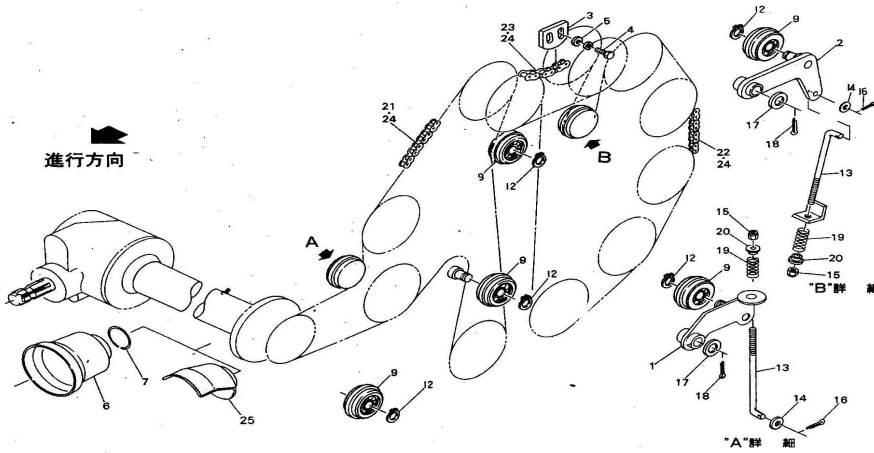


No	Drawing No.	name	quantity	No	Drawing No.	name	quantity
1	YK70. 3-01	sprocket; 22T	13	14	GB5786-8 6	Bolt M8×20 (8.8)	57
2	YK70. 3-02	sprocket; 22T	1	15	GB5786-8 6	Bolt M8×25 (8.8)	3
3	YK70. 3-03	bush; A	11	16	GB5786-8 6	Bolt M8×30 (8.8)	12
4	YK70. 3-04	bush; B	1	17	GB894.1	shaft retaining ring 25	12
5	YK70. 3-05 -00	Roller CP;1	7	18	YK70. 3-1 2	cover plate	1
6	YK70. 3-06 -00	Roller CP;2	2	19	GB6710-8 6	Nut M12	11

7	YK70.3-07 -00	Roller CP; 3	2		20	GB97.1-8 5	flat washer 13×4.5	11
8	YK70.0-08 -00	Roller CP;4	1		21	GB97-87	spring washer 12	11
9	YK70.3-09 -00	Flange CP	12		22			
10	YK70.3-10 -00	Flange CP	12		23			
11	GB7810-87	Spherical ball bearings CS205	24		24			
12	GB/T 7813-1998	bearing seat	22		25	YK70.3-1 3	bush	1
13	YK70.3-11	cover plate	1					

YK0850M round baler

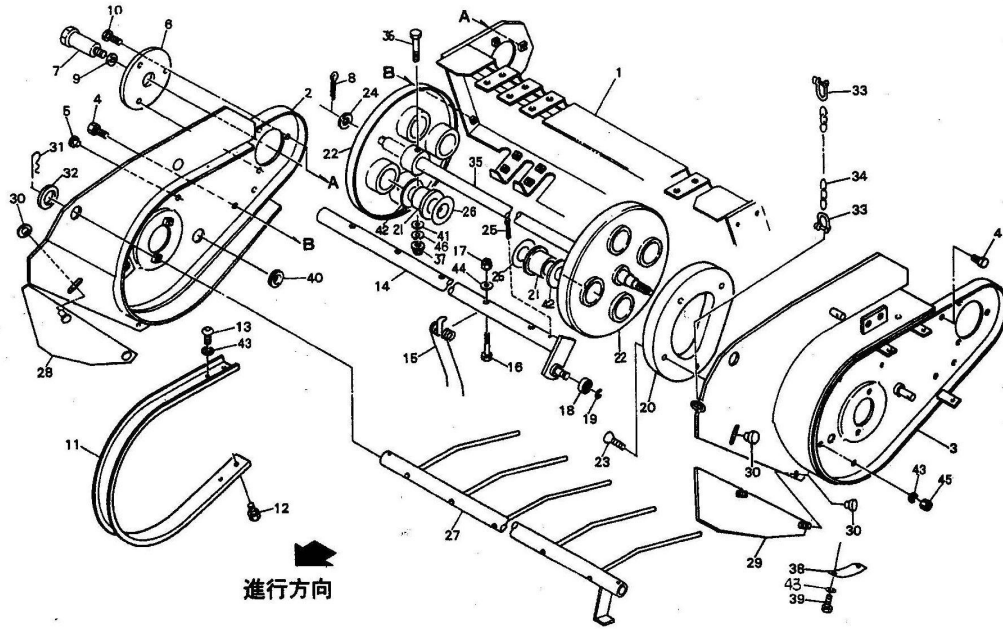
chain transmission assy



No.	Drawing No.	name	quantity	No.	Drawing No.	name	quantity
1	YK70.4-01-00	pulley bracket CP;A	1	15	GB	nylon locking nut M10	2
2	YK70.4-02-00	pulley bracketCP;B	1	16	GB91-87	split pin 3.2×16	2
3	YK70.4-03	tension plate	1	17	GB860-87	Washer 21×1.5	2
4	GB5786-86	Spring washer, bolt M8×25 (8.8)	2	18	GB91-87	split pin 3.2×32	2
5	GB860-87	Washer 8	2	19	YK70.4-06	spring	2
6		Shaft 650	1	20	YK70.4-07	spring seat	2
7		steel wire retaining ring: S	1	21	GB/T1243-2006	Chain 50SH-144-1 YK0850	1
9	YK70.4-04	Pulley CP	6		GB/T1243-2006	Chain 50SH-168-1 YK0870	1
12		shaft retaining ring 17	5	22	GB/T1243-2006	Chain 50SH-126-1 YK0850	1
13	YK50.4-05	pull rod YK0850	2		GB/T1243-2006	Chain 50SH-146-1 YK0870	1
	YK70.4-05	pull rod YK0870	2	23	GB/T1243-2006	Chain 10A-42×1	1
14	GB97.1-85	flat washer 10	2	24	GB/T1243-2006	chain joint 50SH	3

YK0850M round baler

picking-up assy

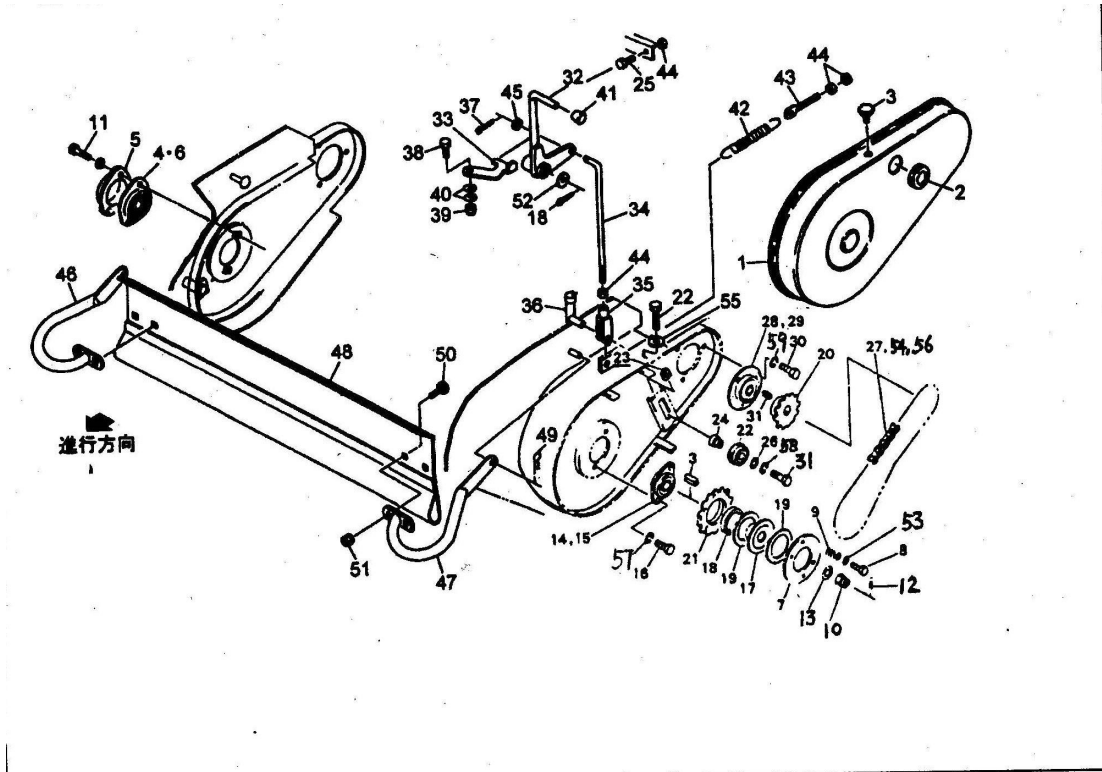


No.	Drawing No.	name	quantity	No.	Drawing No.	name	quantity
1	YK70.5-01-00	picking-up Assy bracket CP	1	24	YK70.5-12	shim	2
2	YK70.5-02-00	picking-up Assy bracket CP;R	1	25	GB91-87	split pin 5×56	8
3	YK70.5-03-00	picking-up Assy bracket CP;L	1	26	GB860-87	Washer 35×1.2	12
4	GB5786-86	bolt M8×20 (8.8)	5	27	YK70.5-13	Spring teeth assy CP	1
5	YK70.5-18	cover: 9	5	28		Side cover shield (Optional)CP;R	1
6	YK70.5-04	Steel plate	1	29		Side cover shield (optional)CP;L	1
7	YK70.5-05	axis	1	30		Plum nut (optional) M8	4

8	GB91-87	Split pin 5×36	1		31		B Pin 19×3	2
9	GB93-87	Spring washer 14	1		32	GB860-87	washer	3
10	GB5786-86	Bolt M8×25 (8.8)	3		33		D Shackle; 6-1/4	2
11	YK70.5-06	Protecting spring teeth	11		34		Rectangle welding chain 4×23P×32	1
12	GB5786-86	bolt M8×20 (8.8)	22		35	YK70.5-15	axis	1
13	RBT08020	HEXAGON SOCKET flat HEAD SCREW: M8×20(10.9)	22		36	GB5786-86	Bolt M10×70 (10.9)	2
14	YK70.5-07 -00	Teeth rod CP	4		37	GB/T3098.9 -2002	Nylon locking nut M10	2
15	YK70.5-08	spring	24		38	YK70.5-16	steel plate	1
16	GB5786-86	bolt M8×55 (8.8)	24		39	GB5786-86	Bolt M8×12 (8.8)	2
17	GB/T3098. 9-2002	Nylon locking nut M8	24		40	YK70.5-17	cover	1
18	GB7810-87	Bearing 6201-2RS(35×12 ×10)	4		41	GB860-87	Washer 10	2
19	GB894.1-8 6	Shaft retaining ring 12	4		42	GB860-87	Washer 43×3.5	8
20	YK70.5-09	Leading track	1		43	GB93-87	Spring washer 8	28
21	YK70.5-10	nylon sleeve	8		44	GB860-87	Washer 8	24
22	YK70.5-11 -00	Racket CP	2		45	GB6710-86	Nut M8 (8.8)	4
23	GB/T 70.3-2008	HEX SOCKET Countersunk head screw M8×20 (10.9)	4		46	GB93-87	spring washer 10	2

YK0850M round baler

Picking-up sprocket Assy

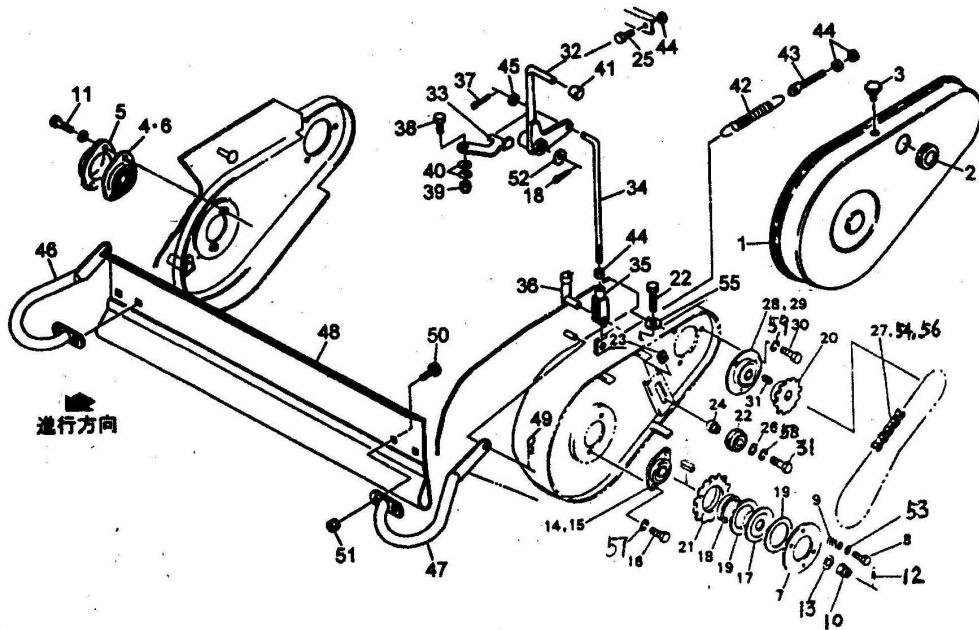


No	Drawing No.	name	quantity	No	Drawing No.	name	quantity
1	YK70.6-01-00	Sprocket cover CP	1	26	GB860-87	washer; 12	1
2	YK70.6-02	Dust cover	1	27	GB/T1243-2006	chain10A-59×1	1
3		Plum-shaped bolt M8×14	3	28	GB/T 7813-1998	Bearing seat PF206	2
4	GB7810-87	bearing CS204-2RS	1	29	GB7810-87	Bearing CS206-2RS	1
5	YK70.6-18	Bearing cover	1	30	GB5786-86	Bolt M10×20 (8.8)	3
6		Bearing seat PFL204	1	31	GB5786-86	Bolt M12×45 (8.8)	1
7	YK70.6-03	Tension disc	1	32	YK70.6-12	Up-down Rod CP	1
8	GB5786-86	Bolt M10×65 (8.8)	4	33	YK70.6-13	Brake plate	1
9	YK70.6-04	彈簧 spring	4	34	YK50.6-14	Pull rod RXYK0850	1

10	GB97.1-85	slotted nut M20×1.5 GB9457	1		YK70.6-14	Pull rod RXYKB0870	1
11	GB5786-86	Bolt M8×25 (8.8)	2	35	YK70.6-15	fork; 10×40	1
12	GB91-87	Split pin 4×25	1	36	GB882-86	pin; 10×40	1
13	GB860-87	washer; 20	1	37	GB91-87	Split pin 3.2×16	1
14	GB/T 7813-1998	Bearing seat PFL205	2	38	GB5786-86	Bolt M10×30(8.8)	1
15	GB7810-87	Spherical ball bearings CS205-2RS	1	39	GB/T3098.9- 2002	Nylon locking nut M10	1
16	GB5786-86	Bolt M10X20 (8.8)	2	40	JB/ZQ 4340-2006	Disc washer 10	2
17	YK70.6-05	Friction disc	1	41	YK70.6-10	Handle sleeve; 12	1
18	YK70.6-06	bush	1	42	YK70.6-17	Extension spring: H	2
19	YK70.6-07	Friction washer	2	43		Adjustable screw ; M10	2
20	YK70.6-08	sprocket; RS50×18T	1	44	GB6710-86	Nut M10 (8.8)	6
21	YK70.6-09	sprocket; RS50×32T	1	45	GB97.1-85	Flat washer 10	1
22	YK70.4-04	Pulley CP	1	46		Elbow bend (optional)CP;R	1
23	GB/T13680 -1992	Square nut	1	47		Elbow bend (optional) CP:L	1
24	YK70.6-11	bush	1	48		Shield (optional)	1
25	GB5786-86	Bolt M10x40 (8.8)	1	49		9 Pin(optional) 8×1.6	2

YK0850M round baler

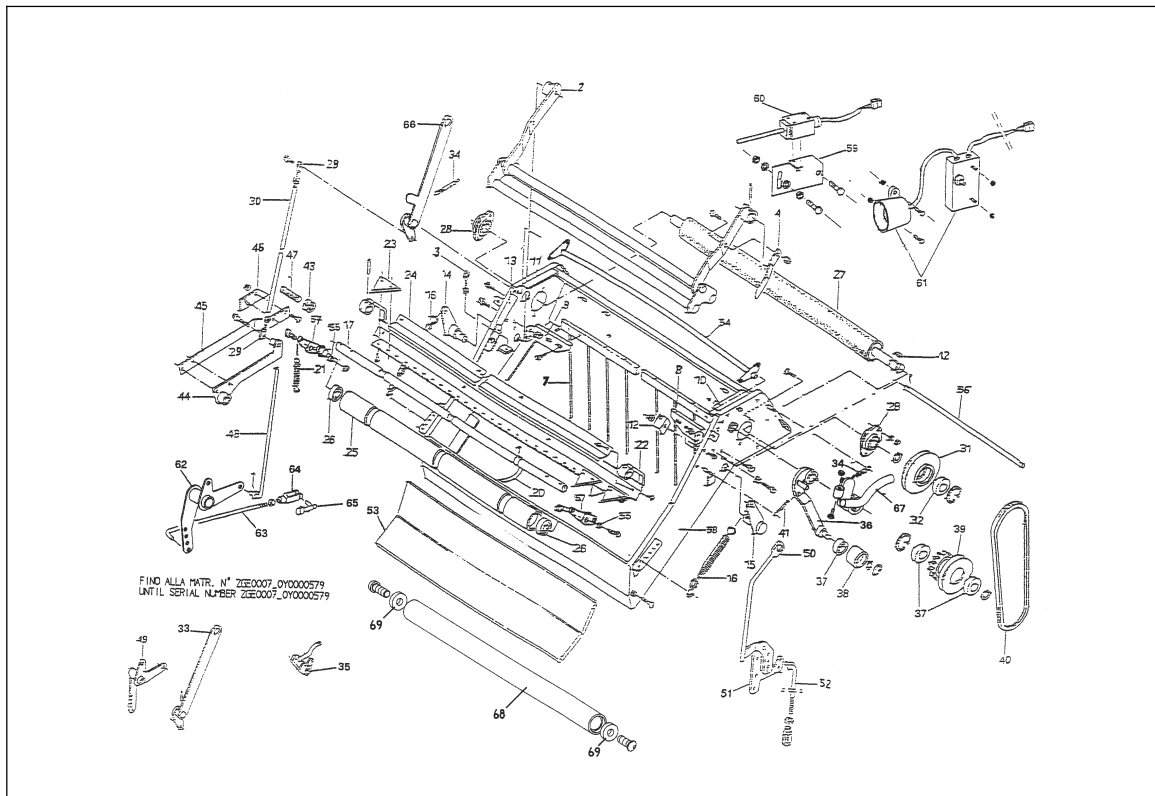
Picking-up sprocket Assy



No.	Drawing No.	name	quantity	No.	Drawing No.	name	quantity
50		Square neck bolt M8×15 (optional)	4	59	GB93-87	Spring washer 10	3
51	GB6710-86	Nut (optional) M8	4				
52	GB860-87	Washer 21×1.5	1		GB6710-86	nut: M12	1
53	GB860-87	washer ; 10	4		GB860-87	washer: 25×35×1.2	1
54		Joint 10A	1			shim: 25.5×0.6	1
56		Coupling part 10A	1		GB91-87	Split pin: 3.2×3.2	1
57	GB93-87	Spring washer 10	2		GB860-87	washer ; 13×4.5	1
58	GB93-87	Spring washer 12	2				

YK0850M round baler

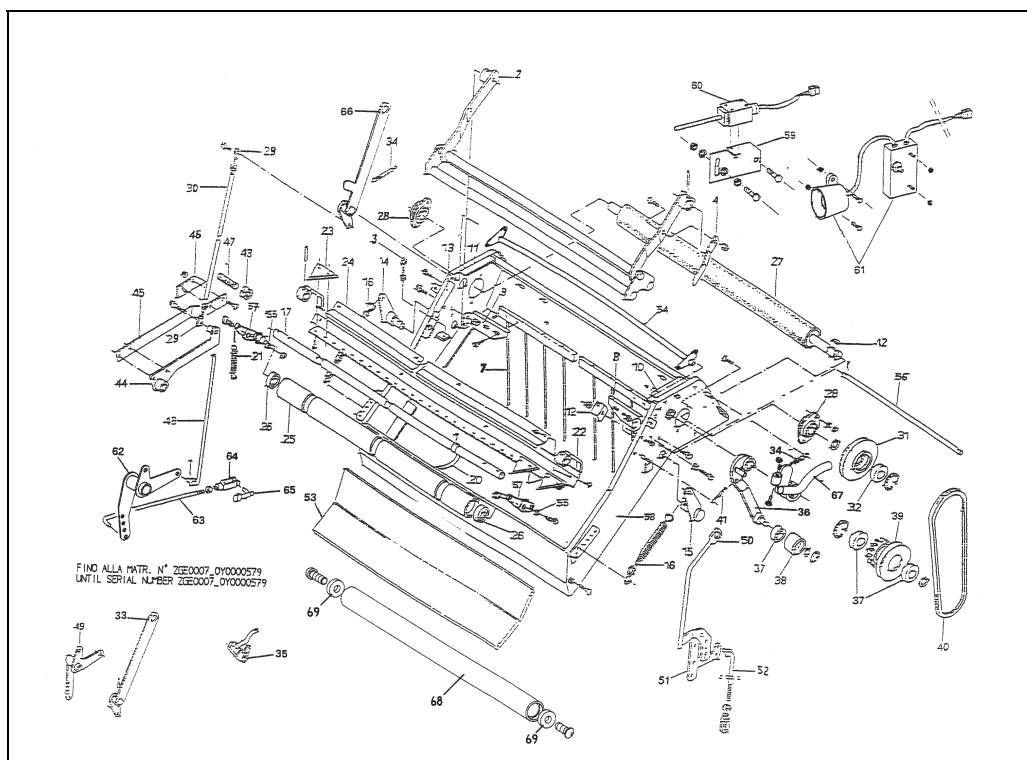
Network platform



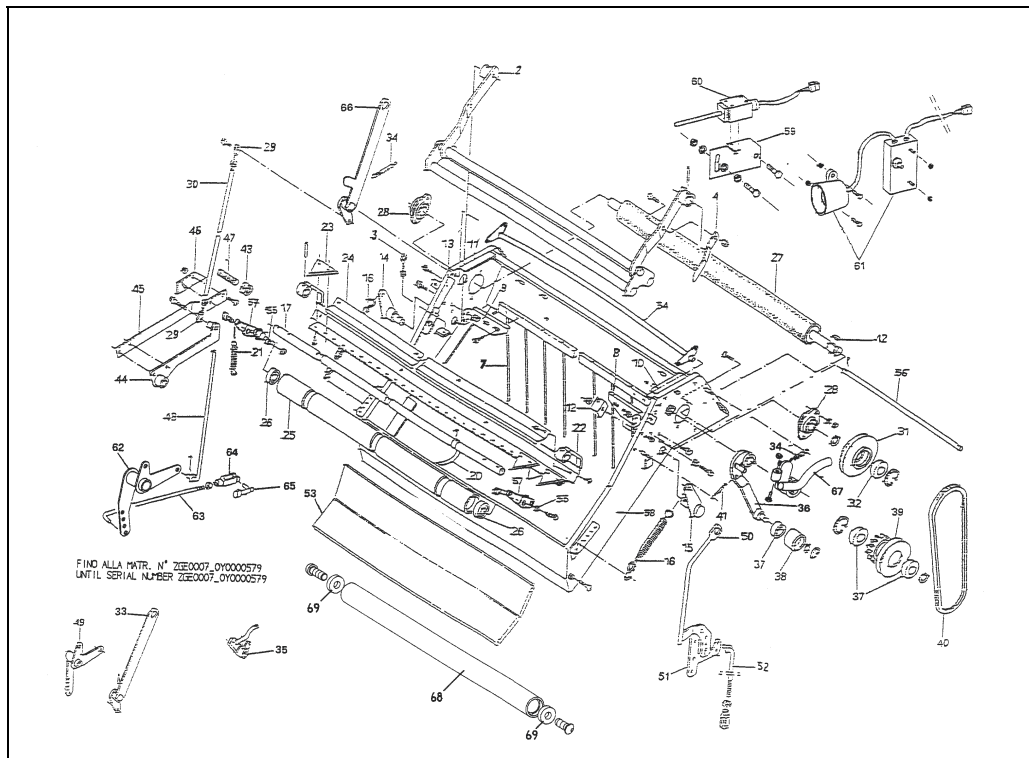
No.	Drawing No.	name	quantity	No.	Drawing No.	name	quantity
1	YK70M-01	Telaio <i>Frame</i>	1	6	YK70M-06	Supporto guida <i>Guide support</i>	1
2	YK70M-02	Freno rete <i>Net brake</i>	1	7	YK 70M-07	Rastrello guida rete <i>Fork</i>	1
3	YK70M-03	Tirante a occhio ø8 <i>Eye bolt ø8</i>	2	8	YK70M-08	Supporto sinistro per rastrello <i>Left fork support</i>	1
4	YK70M-04	Supporto freno rete <i>Support</i>	1	9	YK70M-09	Supporto destro per rastrello <i>Right fork support</i>	1
5	YK70M-05	Guida superiore rete <i>New guide</i>	1	10	YK70M-10	Supporto sinistro per calamita <i>Left-support</i>	1

No.	Drawing No.	name	quantity	No.	Drawing No.	name	quantity
11	YK70M-11	Supporto destro per calamita <i>Right-support</i>	1	19	YK70M-19	Leva sinistra supporto rullo folle <i>Left lever</i>	1
12	YK70M-12	Piastra fissaggio sportello <i>Plate</i>	1	20	YK70M-20	Fascia per rullo folle <i>Band</i>	3
13	YK70M-13	Supporto indicatore pressione balla (solo con legatore a rete) <i>Support pressure indicator (only with net binding device)</i>	1	21	YK70M-21	Molla per leva supporto rullo <i>Spring</i>	2
				22	YK70M-22	Barra portacoltelli <i>Blade support</i>	1
				23	YK70M-23	Lama coltello <i>Blade</i>	19
14	YK70M-14	Cerniera destra per freno rete <i>Right lever</i>	1	24	YK70M-24	Piastra ferma coltelli <i>Plate</i>	1
15	YK70M-15	Cerniera sinistra per freno rete <i>Left lever</i>	1	25	YK70M-25	Rullo condotto <i>Galvanized roller</i>	1
16	YK70M-16	Molla tensione freno bobina <i>Spring</i>	2	26	YK70M-26	Cuscinetto 6004-RSR <i>Bearing 6004-RSR</i>	2
17	YK70M-17	Albero cerniera legatore <i>Shaft</i>	1	27	YK70M-27	Rullo gommato <i>Tired roller</i>	1
18	YK70M-18	Leva destra supporto rullo folle <i>Right lever</i>	1	28	YK70M-28	Cuscinetto SBPFL204 <i>Bearing SBPFL 204</i>	2
No.	Drawing No.	name	quantity	No.	Drawing No.	name	quantity

29	YK70M-29	Snodo MTR-BNM6 <i>Eye bolt MTR-BNM6</i>	2	39	YK70M-39	Ingranaggio tendicatena e comando ligature <i>Tension roll and pulley</i>	1
30	YK70M-30	Tirante <i>Bar-Joint</i>	1	40	YK70M-40	Cinghia di trasmissione sez.Z40 <i>Belt Z40</i>	1
31	YK70M-31	Puleggia condotta comando ligature <i>Pulley</i>	1	41	YK70M-41	Molla per leva tendi cinghia <i>Spring</i>	1
32	YK70M-32	Ruota libera CSK20-PC5 <i>Free wheel CSK20-PC5</i>	1	42	YK70M-42	Chiavetta 6×6×12 <i>key6×6×12</i>	1
33	YK70M-33	Leva comando legatore <i>Lever</i>	1	43	YK70M-43	Dado M 16 sinistro(5588) <i>Nut M 16 left(5588)</i>	1
34	YK70M-34	Molla richiamo barra porta coltelli <i>Spring</i>	2	44	YK70M-44	Leva per piastra supporto coltello <i>Lever</i>	1
35	YK70M-35	Braccio tensionator e cinghia <i>Lever</i>	1	45	YK70M-45	Piastra supporto coltello <i>Plate</i>	1
36	YK70M-36	Leva tendicinghia <i>Lever</i>	1	46	YK70M-46	Coltello <i>Knife</i>	1
				47	YK70M-47	Codolo legatura passo <i>Bar</i>	1
37	YK70M-37	Cuscinetto 6203 2RS <i>Bearing 6203 2RS</i>	3	48	YK70M-48	Indicator e di pressione <i>Pressure indicator</i>	1
38	YK70M-38	Rullo tendicinghia <i>Roller</i>	1	49	YK70M-49	Leva comando legatura <i>Lever</i>	1



No.	Drawing No.	name	quantity	No.	Drawing No.	name	quantity
50	YK70M-50	Leva sollevamento raccoglitore <i>Lever</i>	1	55	YK70M-55	Boccola cer niera per leva <i>Bushing</i>	2
51	YK70M-51	Piastra per leva di sollevamento raccoglitore <i>Plate</i>	1	56	YK70M-56	Guida inferiore rete <i>Net guide</i>	1
				57	YK70M-57	Leva supporto rullo folle(destra/sinistra) <i>Lever(right/left)</i>	1+1
52	YK70M-52	Triante alzata raccoglitore <i>Rod</i>	1	58	YK70M-058	Telaio <i>Frame</i>	1
53	YK70M-53	Piastra supporto bobina rete <i>Plate, support</i>	1	59	YK70M-059	Supporto interruttore e sriena <i>Support</i>	1
				60	YK70M-060	Interruttore <i>Switch</i>	1
54	YK70M-54	Guida inferiore rete <i>Net guide</i>	1	61	YK70M-060	Sirena con scatola portabatteria <i>Siren with battery box</i>	1

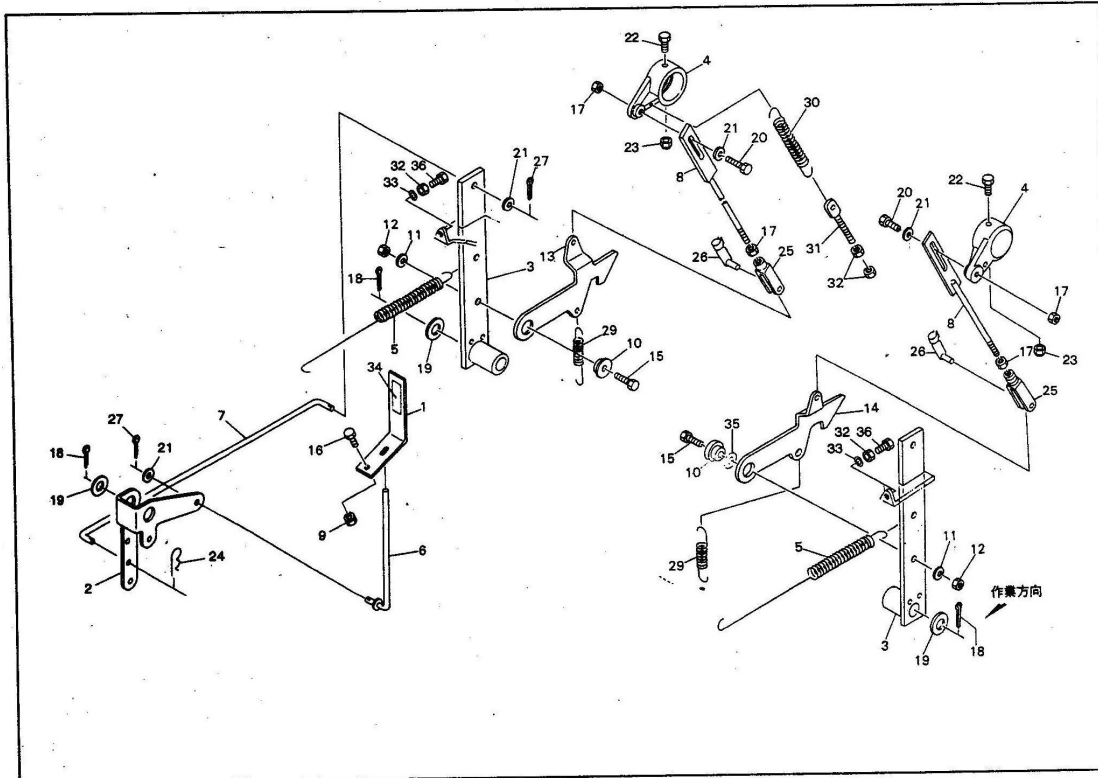


No.	Drawing No.	name	quantity	No.	Drawing No.	name	quantity
62	YK70M-62	Leva comando legatura Lever	1	66	YK70M-66	Leva comando legatore Lever	1
63	YK70M-63	Tirante innesto legatore(sol o per leg.rete) Rod(Only for net binding device)	1	67	YK70M-67	Braccio tensionatore cinghia Lever	1
				68	YK70M-68	Guida inferiore rete Net guide	1
64	YK70M-64	Forcella M 8 Fork end M 8	1	69	YK70M-69	Cuscinetto 6001-2RS Bearing 6001-2RS	2
65	YK70M-65	Pemo forcella ø8 Pin ø8	1				

YK0850M round baler

Topper cover rod

机架上连杆 AS

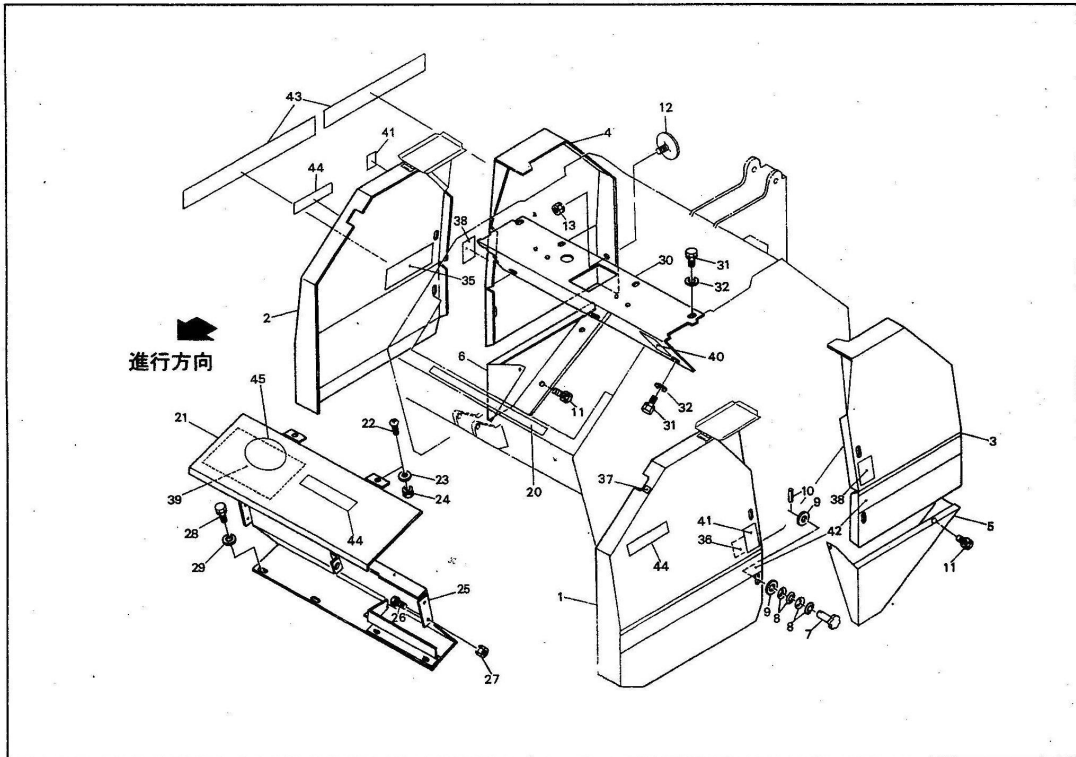


No.	Drawing No.	name	quantity	No.	Drawing No.	name	quantity
1	YK70. 10-01	Indicator board	1	17	GB6710-86	nutM8 (8)	4
2	YK70. 10-02	Fork plate	1	18	GB91-87	Split pin3.2×32	3
3	YK70. 10-03-00	Connecting plate	2	19	GB97. 1-85	平垫21×1.5 washer	3
4	YK70. 10-04	Topper cover	2	20	GB5786-86	Bolt M8×25 (8.8)	2
5	YK50. 10-05	extension spring YK0850	2	21	GB97. 1-85	washer 8	4
	YK70. 10-05	extension spring YK0870	2	22	GB5786-86	bolt M8×75 (8.8)	2
6	YK50. 10-06-00	Indicator rod YK0850	1	23	GB/T3098.9-2002	Nylon locking nut M8	2

	YK70.10-06-00	Indicator rod YK0870	1		24		B-pin 8×1.6	1
7	YK50.10-07	Pull rod YK0850	1		25	YK70.7-1 3	Connecting yoke; 8×32	2
	YK70.10-07	Pull rod YK0870	1		26	YK70.7-1 4	Connecting pin; 8×32	2
8	YK50.10-08-00	Connecting rod YK0850	2		27	GB91-87	Split pin3.2×16	2
	YK70.10-08-00	Connecting rod YK0870	2		29	YK70.10-12	Extension Spring ; 2.3×1 8×6 8	2
9	GB6710-86	nut M8	1		30	YK70.10-13	Extension Spring; H	1
10	YK70.10-09	Shaft sleeve	2		31	YK70.10-14	Pull rod; M1 0	1
11	GB93-87	Spring washer 10	2		32	GB6710-86	nut M10 (8)	4
12	GB6710-86	nut 10	2		33	GB93-87	washer 10	2
13	YK70.10-10	hook ; R	1		34		sticker	1
14	YK70.10-11	hook: L	1		35	YK70.10-15	Adjusting shimΦ10.5×0.27	-
15	GB5786-86	Bolt M10×35 (8.8)	2		36	GB5786-86	Bolt M10×35 (8.8)	2
16	GB5786-86	bolt M10×20 (8.8)	1					

YK0850M round baler

Cover

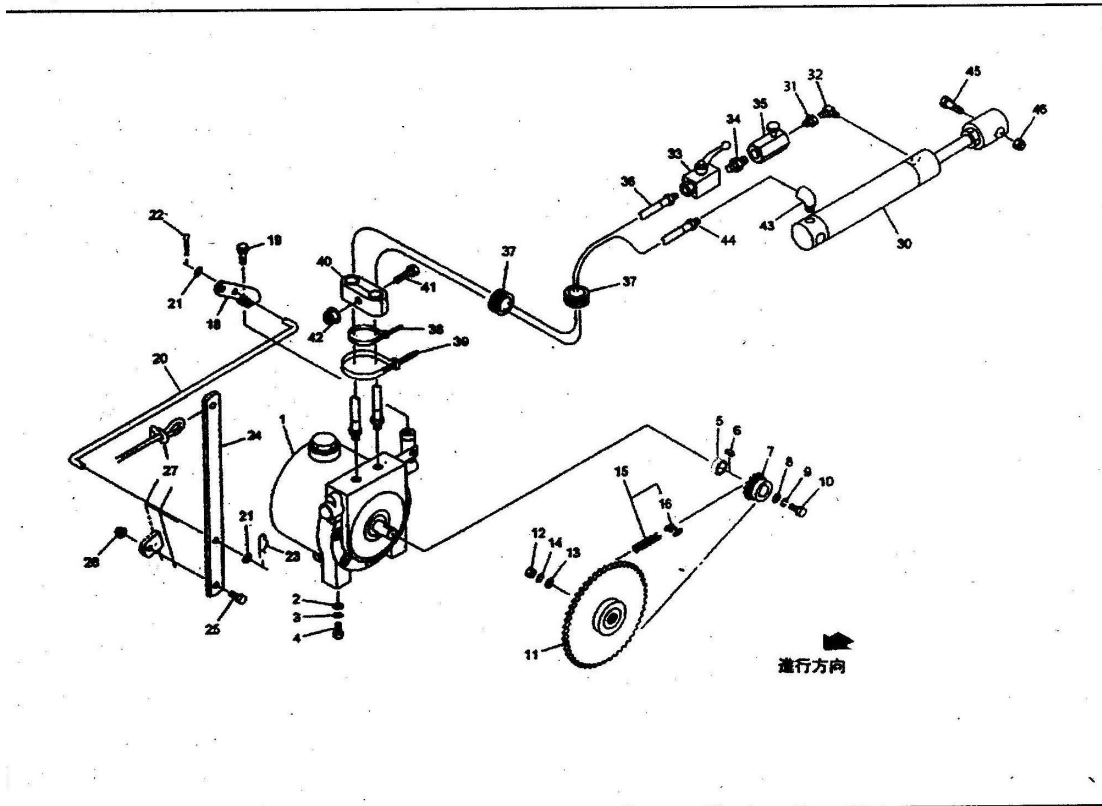


No.	Drawing No.	name	quantity	No.	Drawing No.	name	quantity
1	YK50.11-01-00	Front cover housing CP;L YK0850	1	26	GB5786-86	bolt M8×20 (8.8)	4
	YK70.11-01-00	Front cover housing CP;L YK0870	1	27	GB6710-86	nut M8	4
2	YK50.11-02-00	Front cover housing CP;R YK0850	1	28	GB5786-86	bolt M8×20 (8.8)	4
	YK70.11-02-00	Front cover housing CP;R YK0870	1	29	GB97.1-85	Flat washer 8	4
3	YK50.11-03-00	rear cover housing CP;L YK0850	1	30	YK50.11-12-00	Cover housing; CP YK0850	1
	YK70.11-03-00	Rear cover housing CP;L YK0870	1		YK70.11-12-00	Cover housing; CP YK0870	1
4	YK50.11-04-00	rear cover housing CP;R YK0850	1	31	GB5786-86	bolt M8×20 (8.8)	8

	YK70.11-04-00	Rear cover housing CP; R YK0870	1		32	GB97.1-85	Flat washer8	8
5	YK50.11-05-00	Cover housing CP;L YK0850	1		35	YK70.11-13	sticker	1
6	YK50.11-06-00	Cover housing CP; YK0850	1		36	YK70.11-14	sticker	1
7	YK70.11-07	Star handle : 50	8		37	YK70.11-15	sticker	1
8	JB/ZQ4340-2006	Disc spring washer	32		38	YK70.11-16	Warning sticker	2
9	GB97.1-85	Flat washer 8	16		39	YK70.11-17	sticker	1
10	GB879-86	Spring cylindrical pin 4×16	8		40	YK70.11-18	Warning sticker	1
11	GB5786-86	Bolt M8×16 (8.8)	4		41	YK70.11-19	Warning sticker	2
12	YK70.11-08	reflector; R-80CI	2		42	YK50.11-20	Warning sticker ; 850L YK0850	1
13	GB6710-86	Nut M5	2			YK70.11-20	Warning sticker ; 870L YK0870	1
20	YK70.11-09	magnet	1		43	YK50.11-21	Warning sticker ; 850R YK0850	1
21	YK50.11-10-00	gate; CP YK0850	1			YK70.11-21	Warning sticker ; 870R YK0870	1
	YK70.11-10-00	gate; CP YK0870	1		44	YK70.11-22	Name of manufacturer	3
22	GBT 818-2000	cross head screw M6×12	2		45	YK70.11-23	sticker	1
23	GB97.1-85	Washer 6	2		46	YK70.11-24	sticker	1
24	GB6710-86	Nut M6	2			GB93-87	Spring washer:5	2
25	YK50.11-11-00	Cover box CP YK0850	1					
	YK70.11-11-00	Cover box CP YK0870	1					

YK0850M round baler

Hydraulic pump assy



No	Drawing No.	name	quantity	No	Drawing No.	name	quantity
1	YK70.12-04-00	Hydraulic pump station ; 95R	1	22	GB91-87	Split pin 3.2×16	1
2	GB97.1-85	Washer 10	2	23		B-pin 8×1.6	1
3	GB93-87	Spring wahser 10	2	24	YK70.12-07	plate	1
4	GB5786-86	boltM10×25 (8,8)	2	25	GB5786-86	bolt M8×25 (8.8)	1
5	YK70.12-01	Check sleeve	1	26	GB/T3098.9-2002	Nylon locking nut M8	1
6	GB1096-79	Flat key5×5×20 (B type)	1	27	YK70.12-08	Nylon rope 6×3500	1
7	YK70.12-02	Small pulley 9T	1	30	YK70.12-09-00	Cylinder CSH35×210×375	1

8	GB97.1-8 5	Washer 6	1	31		Conical female and male outside coupler G1/4×R1/4	1
9	GB93-87	Spring washer 6	1	32		90° conical male inside coupler G1/4×R1/4	1
10	GB5786-8 6	bolt M6×16 (8, 8)	1	33	GB/T12223- 2005	Control volve Rc1/4	1
11	YK70.12- 03	Large pulley 43T	1	34		male coupler R1/4	1
12	GB6710-8 6	nutM12 (8.8)	1	35	GB/T8100-1 987	Single-direction throttle valve Rc1/4	1
13	GB97.1-8 5	washer: 13×4.5	1	36	GB/T1277-9 9	Rubber hose G1 / 4×1000	2
14	GB93-87	Spring washer 12	1	37	YK70.12-10	bush; Φ35	2
15	GB/T1243 -2006	chain08A-56×1	1	38		Plastic hoop 2.5×100	3
16	GB/T1243 -2006	Chain joint 08A	1	39		Plastic hoop 4.8×251	2
18	YK70.12- 05	Conneting board	1	43		90° conical male inside coupler G1/4×R1/4	4
19	GB5786-8 6	Bolt M8×16 (8.8)	1	44		90° female coupler G1/4	2
20	YK70.12- 06	Connecting rod	1	45	GB5786-86	bolt M16×80 (8.8)	2
21	GB97.1-8 5	Washer 8	2	46	GB/T3098.9 -2002	Nylon locking nut M6	2